

**Name:**

---

**Hour:**

---

**6<sup>th</sup> Grade Choir**

**Warm-Ups and References**

**2016-2017**



Teacher: Ms. Anna Pulcer  
Phone Number: (734)-955-1712  
E-mail: [apulcer@summit-academy.com](mailto:apulcer@summit-academy.com)

# Warm-Ups February 1-5

## WELCOME TO CHOIR ☺

Pass Out Syllabus.

-Discuss Class Procedures found in the Syllabus

**-Syllabus Contract Due Signed on September 15<sup>th</sup>**

**-Must have Band Binder by September 9<sup>th</sup> and Red Book for Class by Sept 29<sup>th</sup>**

**-Warm Up and Reference Packet belongs in your binder at all times!**

### Musical Staff

**Definition:** 5 Lines and 4 Spaces on Which Music is Written

-Every Line or Space on the staff represents a white Key on the keyboard

### Barlines

**Definition:** Vertical lines that cut the staff into sections (draw a staff with 3 barlines)

### Measure

**Definition:** a section of the staff with specific counts.

**Draw a Staff with 5 measures**

### Double Barline

**Definition:** Shows us the end of the music.

### Repeat Sign

**Definition:** Shows to go back to the beginning, or the reverse repeat sign and sing/play the section again.

Below draw a staff with 4 measures, a double barline at the end, and a repeat sign in measure 2.

## Treble Clef

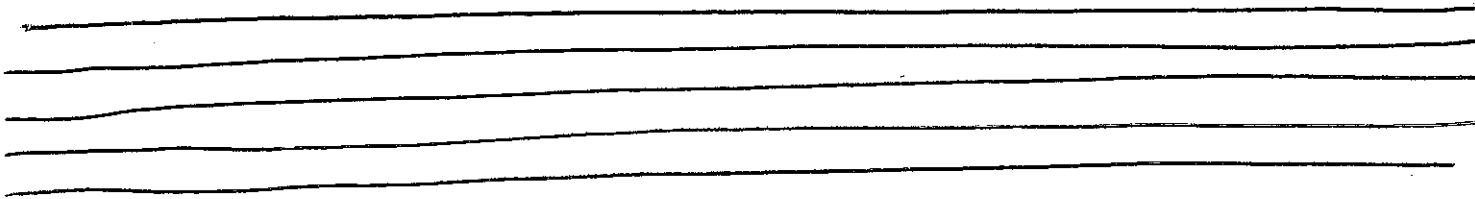
Definition: Shows where \_\_\_\_\_ is located on the staff

Also known as the \_\_\_\_\_ Clef

Must swirl around 2<sup>nd</sup> line of the staff

Must cross over the 4<sup>th</sup> line of the staff

Draw the Treble Clef 10 times on the staff below.

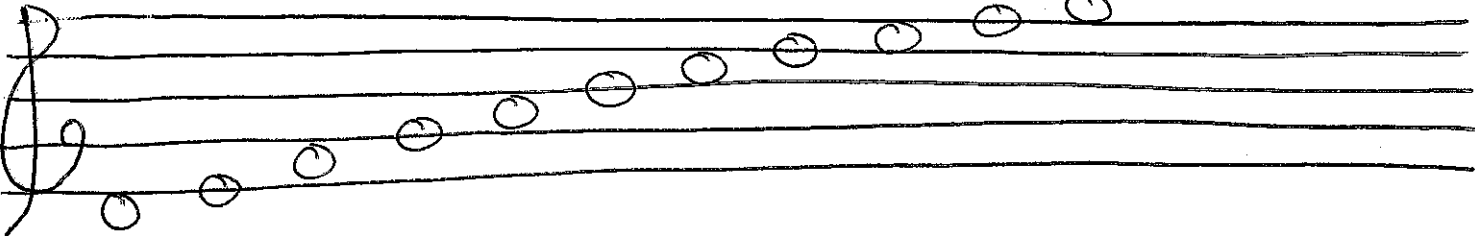


## Treble Notes

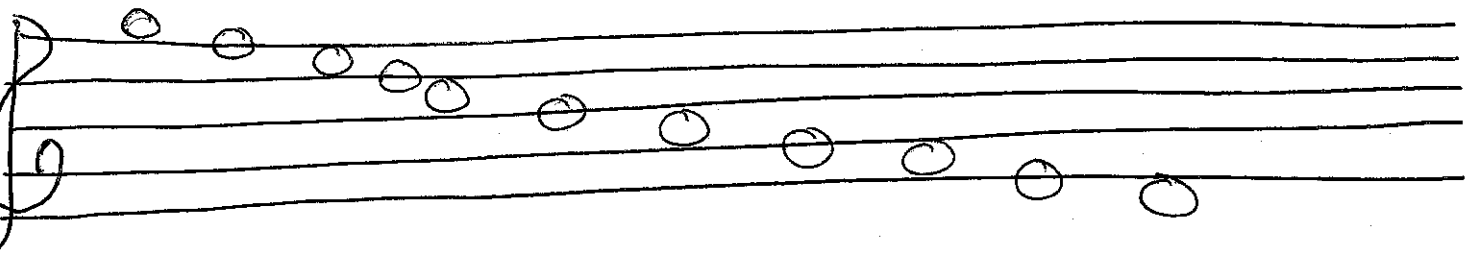
Up the Staff=

Down the Staff=

1<sup>st</sup> Find G!



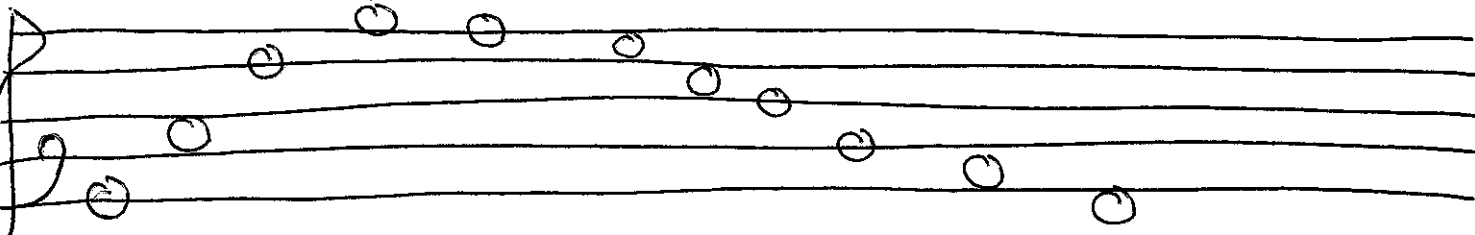
On the Treble Clef Staff below, write the correct note name underneath each note.



On the Treble Clef Staff below, draw the correct note underneath each note.

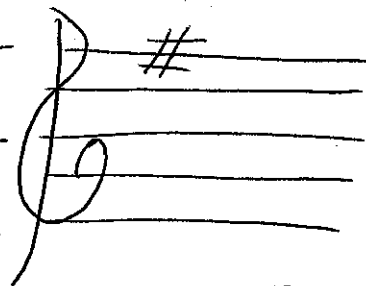
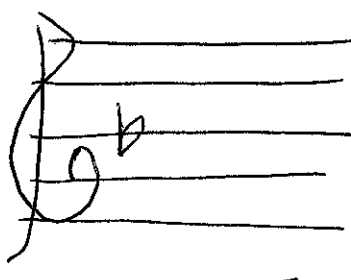
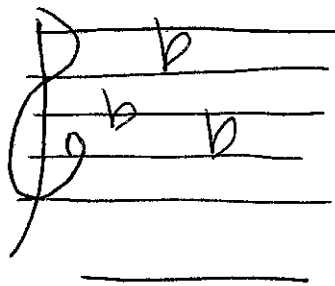
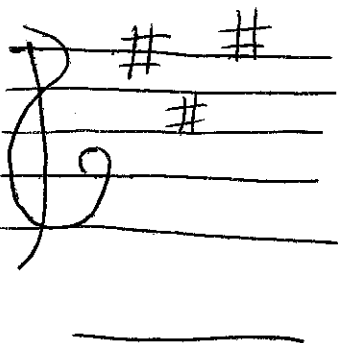
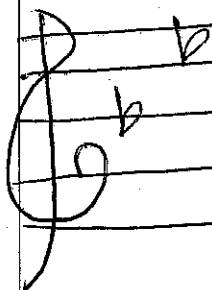


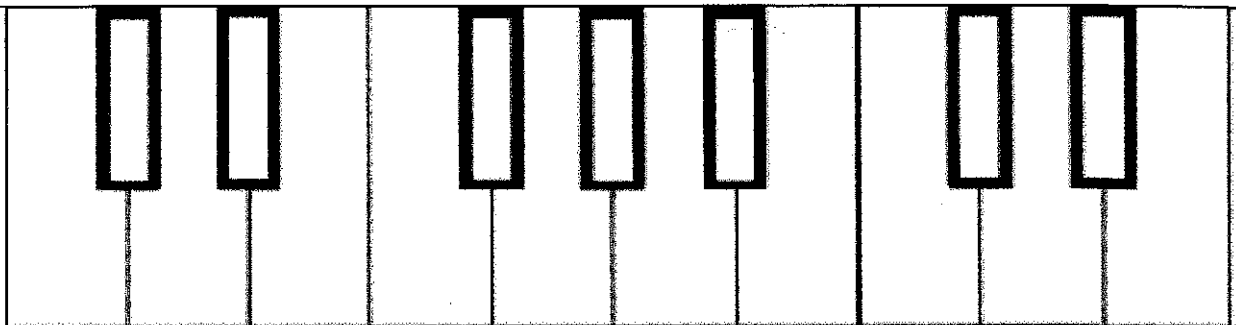
On the Treble Clef Staff below, draw the correct note underneath each note.



# FRIDAY PRACTICE

Key Signature=





\_\_\_ is to the \_\_\_ of the 2 \_\_\_ keys

Each Note is a \_\_\_ apart

A flat sign= \_\_\_ = \_\_\_ the pitch by \_\_\_

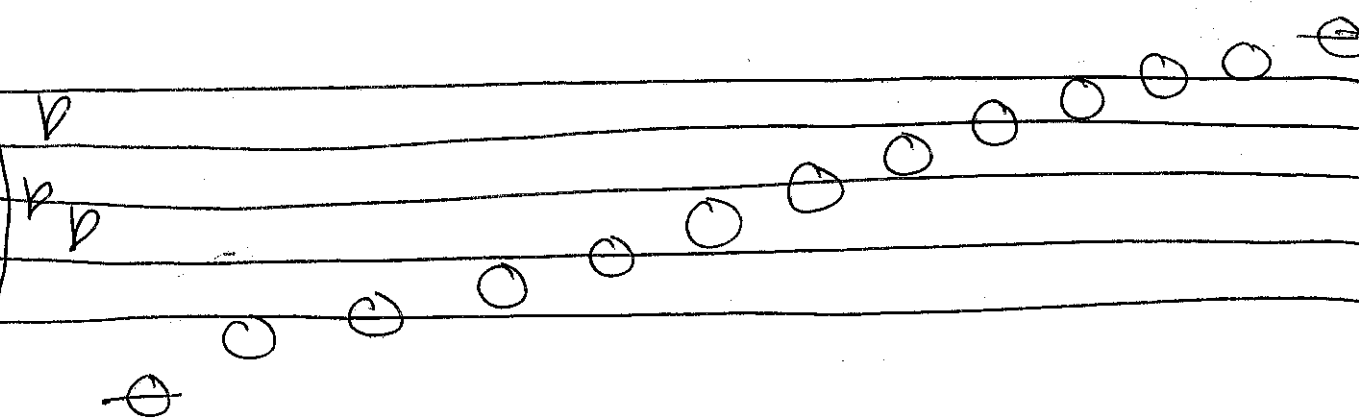
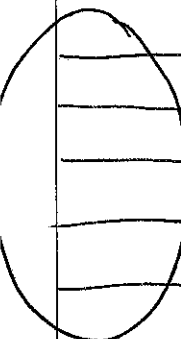
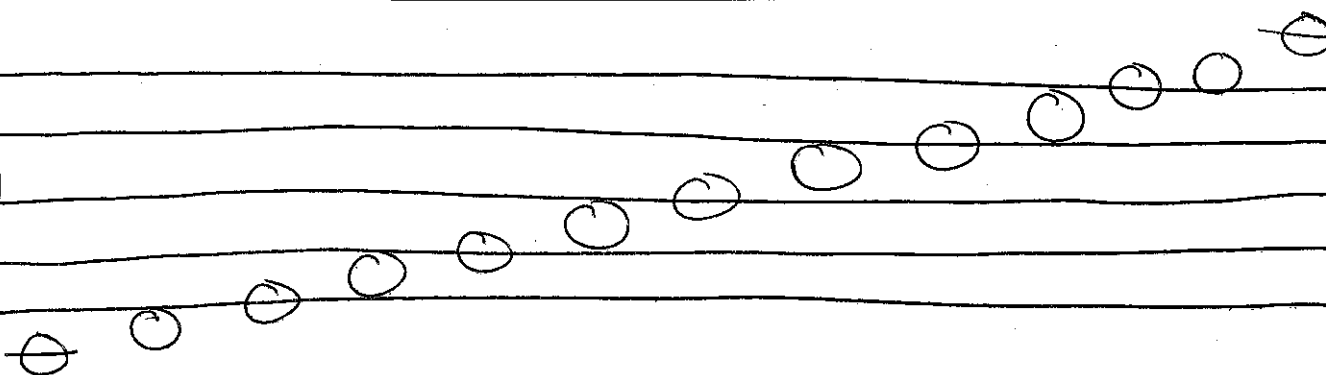
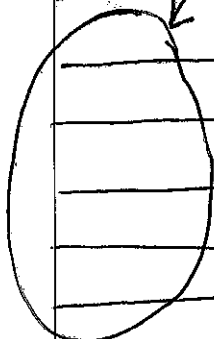
A sharp sign= \_\_\_ = \_\_\_ the pitch by \_\_\_

Enharmonic Notes=

### TREBLE CLEF NOTE NAME PRACTICE

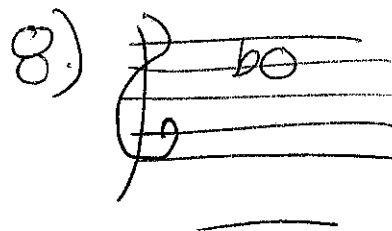
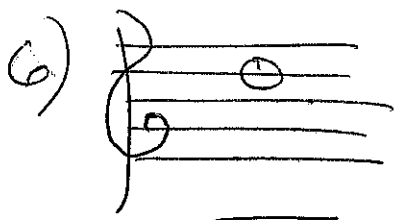
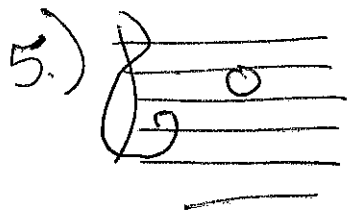
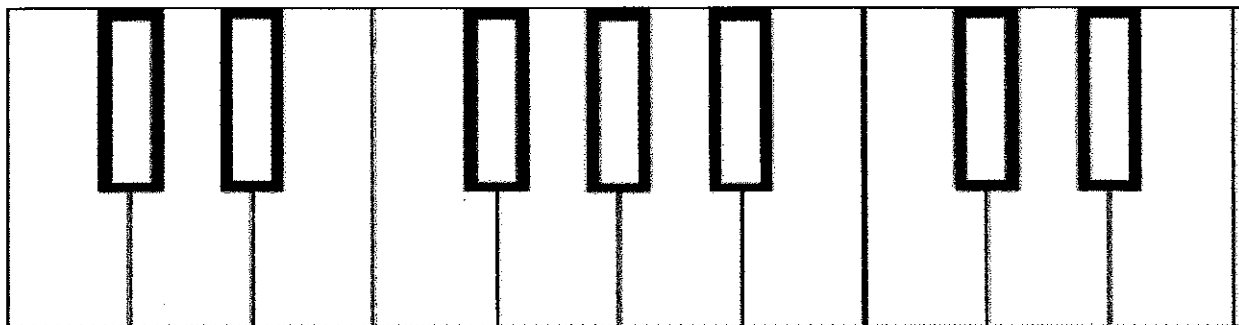
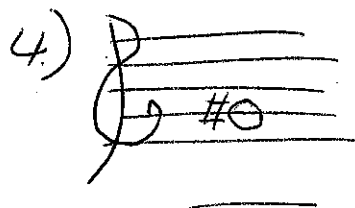
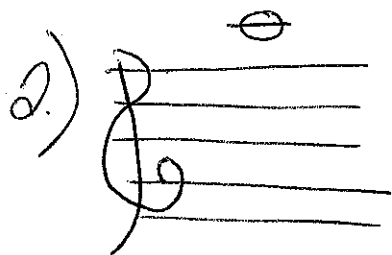
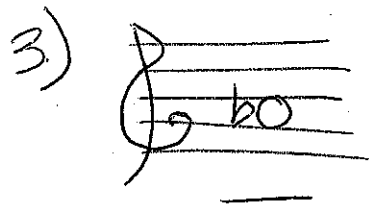
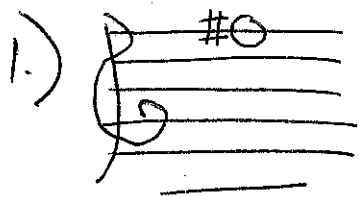
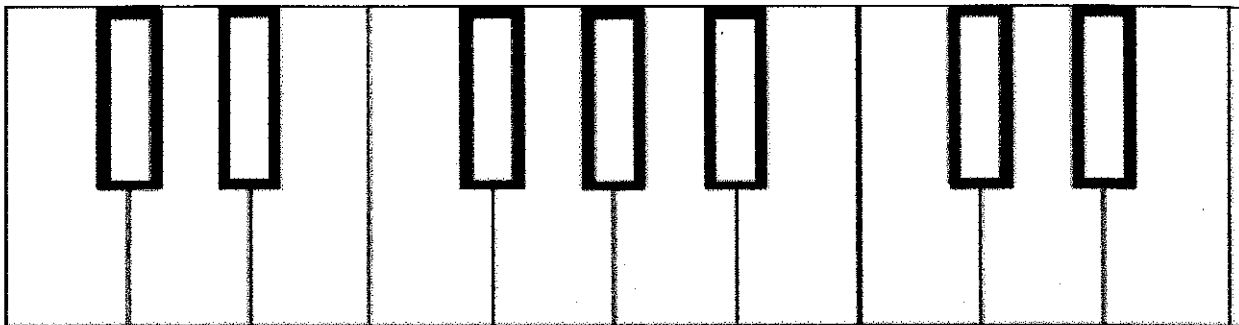
Ledger Line= \_\_\_\_\_

Draw Treble clef



Draw Treble clef

# Treble Clef Notes Location on the Keyboard



## Bass Clef

Definition: Shows where \_\_\_\_\_ is located on the staff

Also known as the \_\_\_\_\_ Clef

Dot on the 4<sup>th</sup> line of the staff (F line)

Attach a ½ heart to the dot

Place 2 dots one above the F line, and 1 below the F line

Draw the Bass Clef 10 times on the staff below.

## Bass Notes

Up the Staff=

Down the Staff=

1<sup>st</sup> Find F!

On the Bass Clef Staff below, write the correct note name underneath each note.

On the Bass Clef Staff below, draw the correct note underneath each note.

On the Bass Clef Staff below, draw the correct note underneath each note.

Bass Clef Note Names  
Ledger Line=

Draw  
Bass  
clef

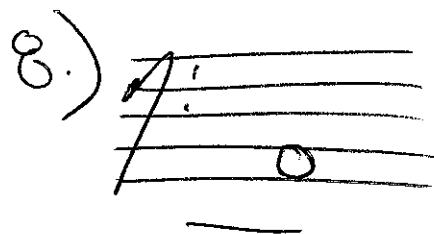
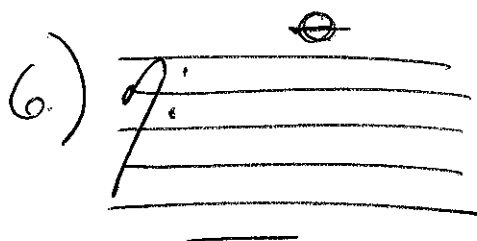
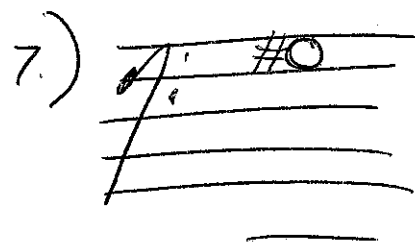
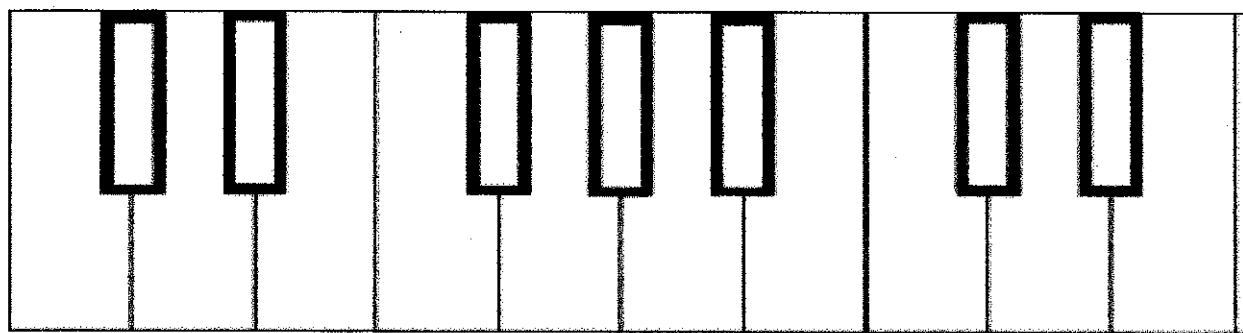
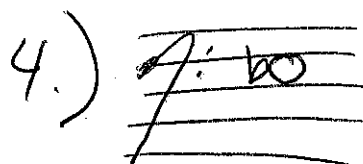
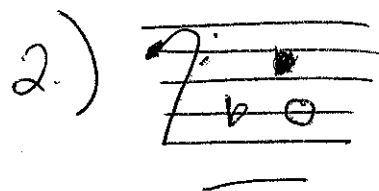
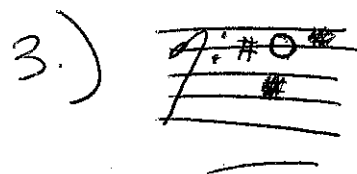
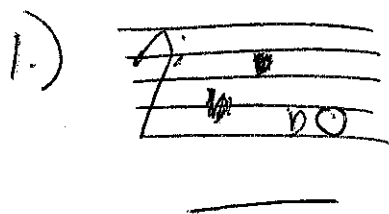
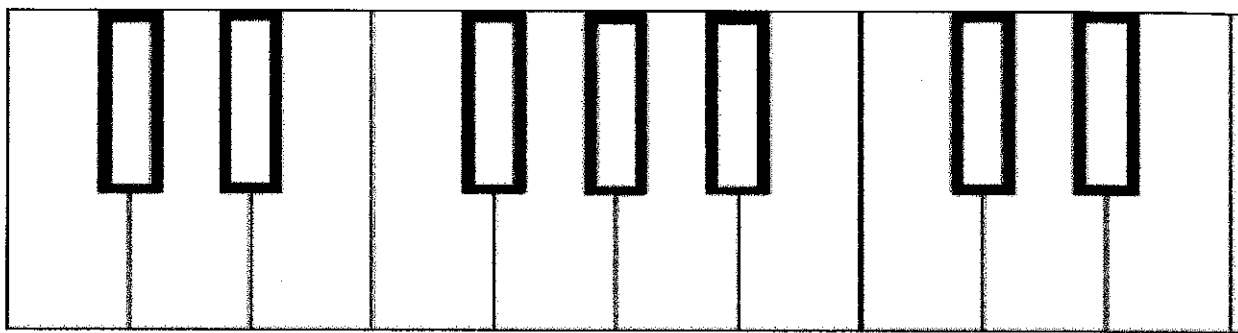
Draw  
Bass  
clef

Draw  
Bass  
clef

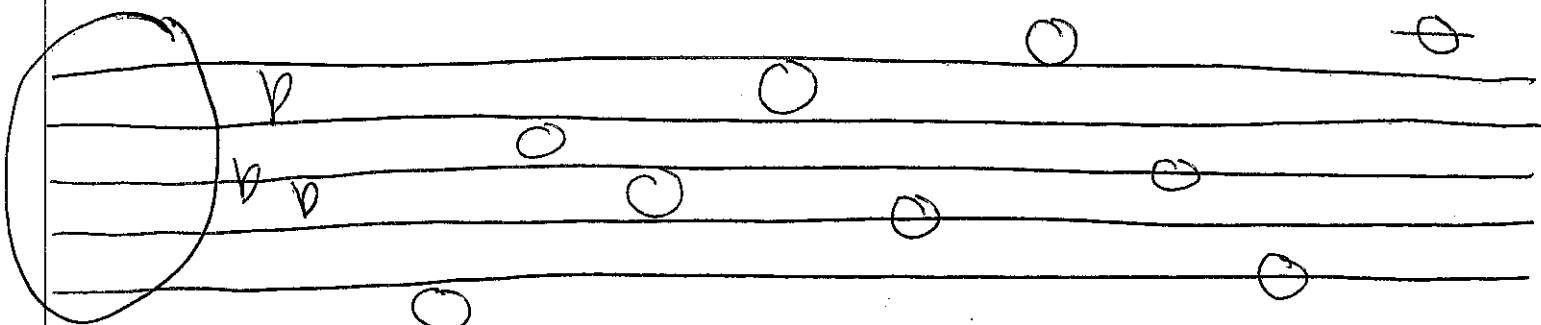
Draw  
Bass  
clef



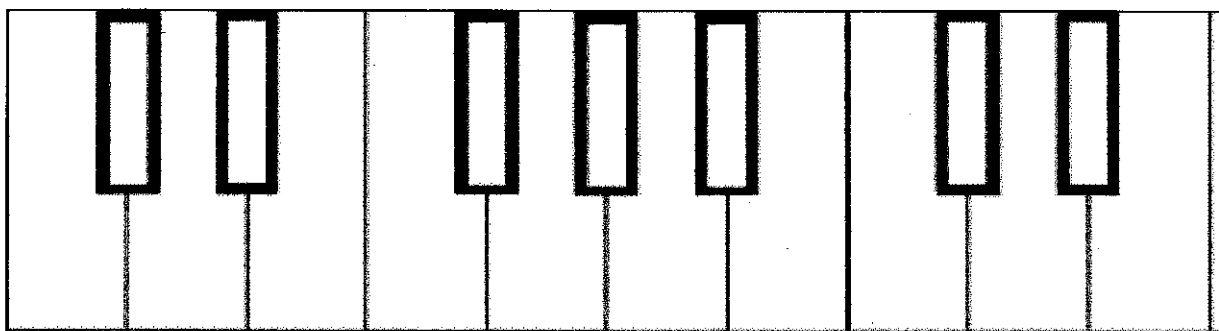
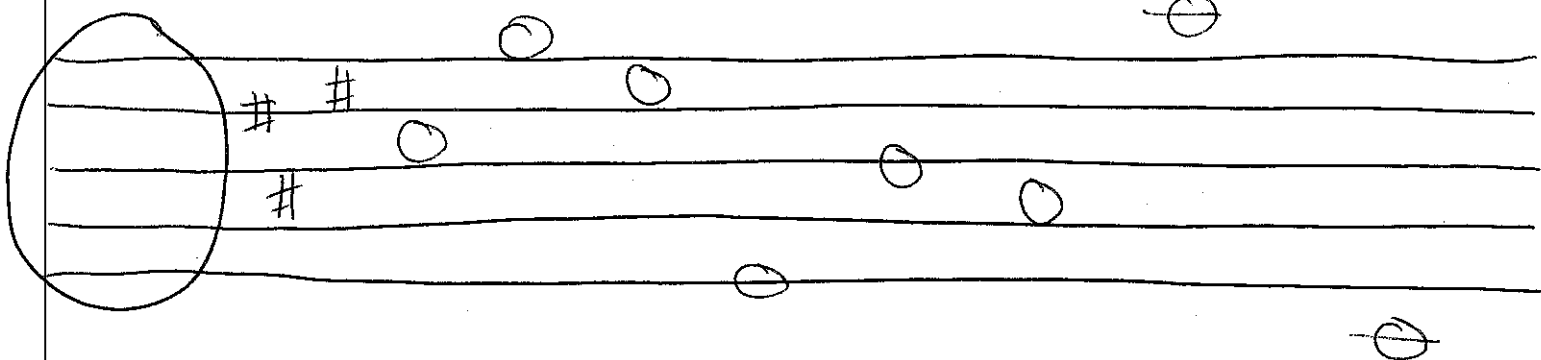
# Bass Clef Notes Location on a Keyboard



# TREBLE CLEF NOTE NAMES



# BASS CLEF NOTE NAMES



\_\_\_ is to the \_\_\_ of the 2 \_\_\_ keys

flat sign= \_\_\_ = \_\_\_ the note a \_\_\_

sharp sign= \_\_\_ = \_\_\_ the note a \_\_\_

Enharmonic notes=

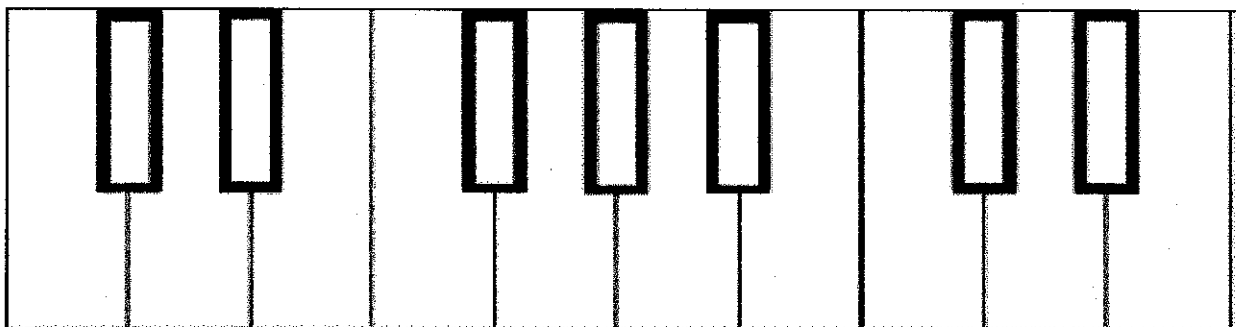
# NOTE REVIEW

## Review for Quiz 1

-Notes on a keyboard  
-Treble Clef  
-Bass Clef

-Treble Clef Notes  
-Bass Clef Notes

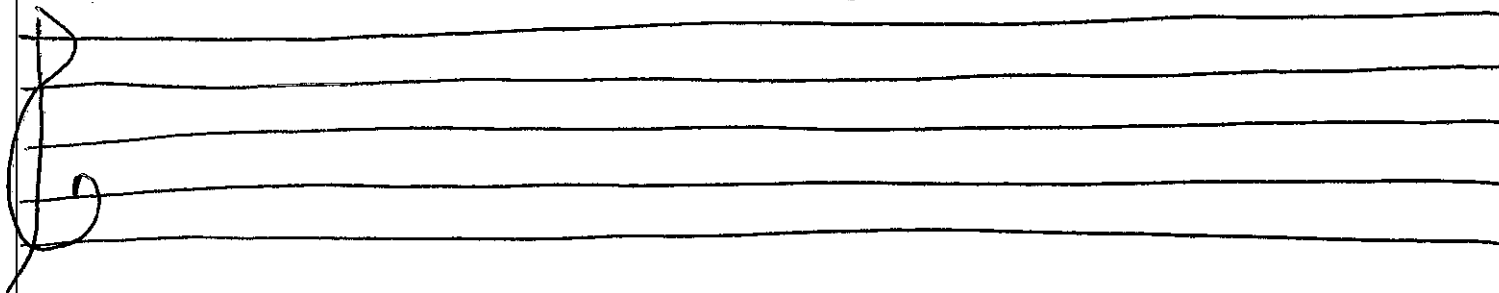
## How to build a Major Scale



Notes on the keyboard= \_\_\_\_\_ apart

Major Scale Pattern= \_\_\_\_\_

*B<sup>b</sup> Major Scale*





## Time Signature

Definition: tells us how many beats are in each measure and which note gets the beat.

Not a fraction

Top number tells us how many beats are in each measure

Bottom number tells us what note gets the beat

Draw a staff with 3 measures and a double barline at the end. At the front of the 1<sup>st</sup> measure write a time signature that has 4 beats in each measure, with a quarter note getting the beat.

Draw a staff with 3 measures and a double barline at the end. At the front of the 1<sup>st</sup> measure, write a time signature that has 2 beats in each measure, with the quarter note getting the beat.

## Half notes

Definition: 2 beats

Looks like an open note head

The stem can go up or down

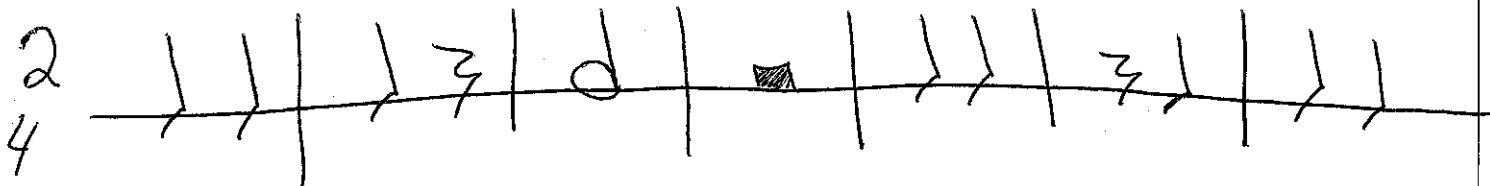
## Half Rest

Definition: 2 silent Beats

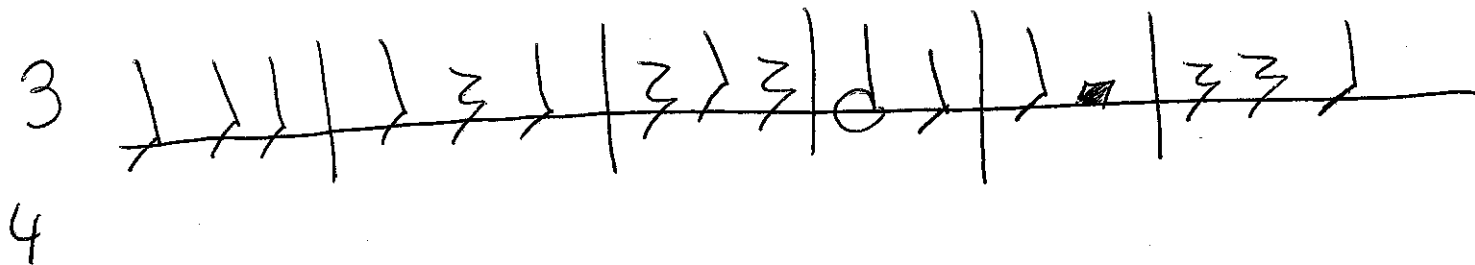
Looks like a rectangle above the middle line of the staff

HALF Note Looks like a HAT

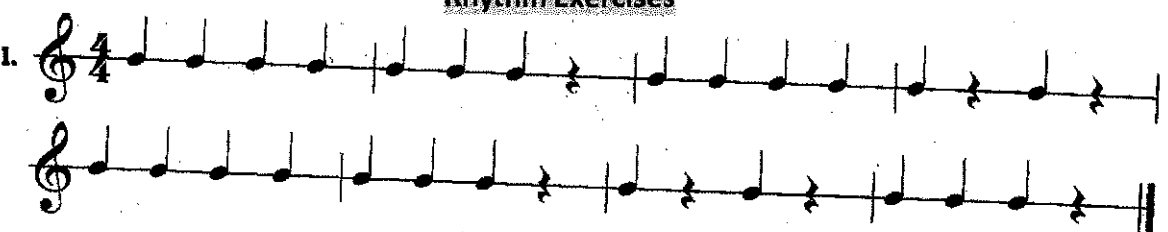
Look at the staff below. Tell me what each part of the time signature tells me, and write the counts below for each rhythm.

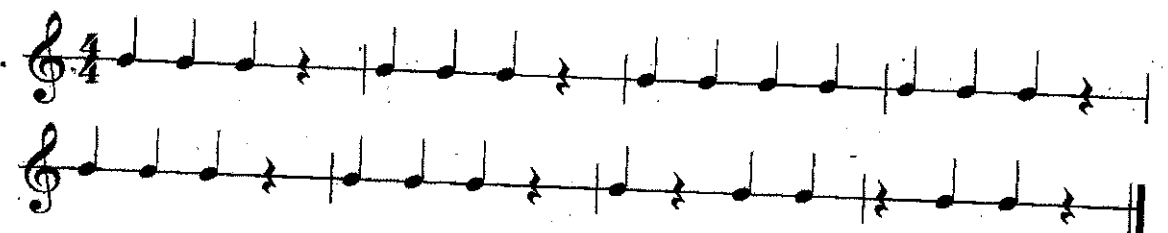


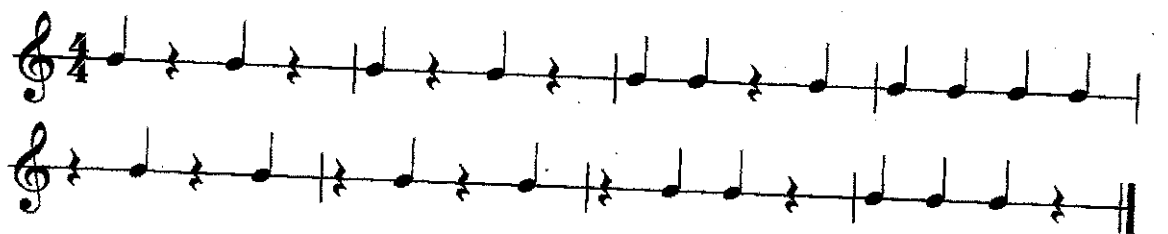
Look at the staff below. Tell me what each part of the time signature tells me, and write the counts below for each rhythm.

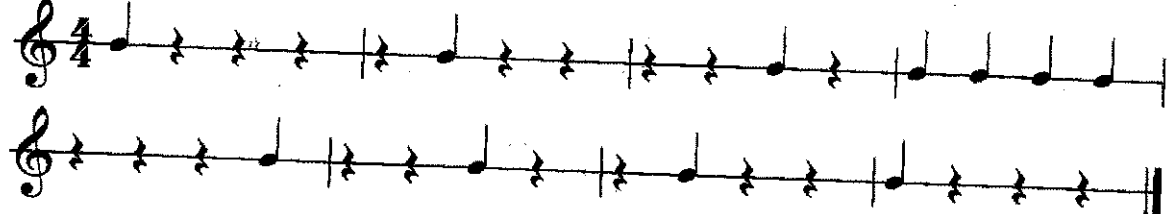


### Rhythm Exercises

1. 

2. 

3. 

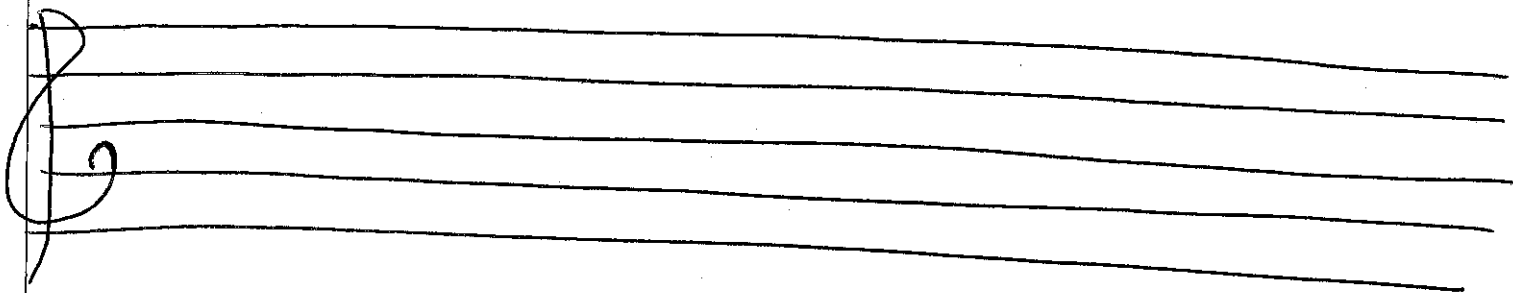
4. 

### Pitch Exercises C Major

5. 

6. 

F Major



## Rhythm Exercises

1.

2.

3.

4.

### Whole Notes

Definition: 4 beats

Looks like an open note head

There is no stem

### Whole Rest

Definition: 4 silent Beats

Looks like a rectangle **below** the middle line of the staff

**WHOLE** note is a **HOLE** to fall into

Look at the staff below. Tell me what each part of the time signature tells me, and write the counts below for each rhythm.

4

Look at the staff below, Tell me what each part of the time signature tells me, and write the counts below for each rhythm.

4



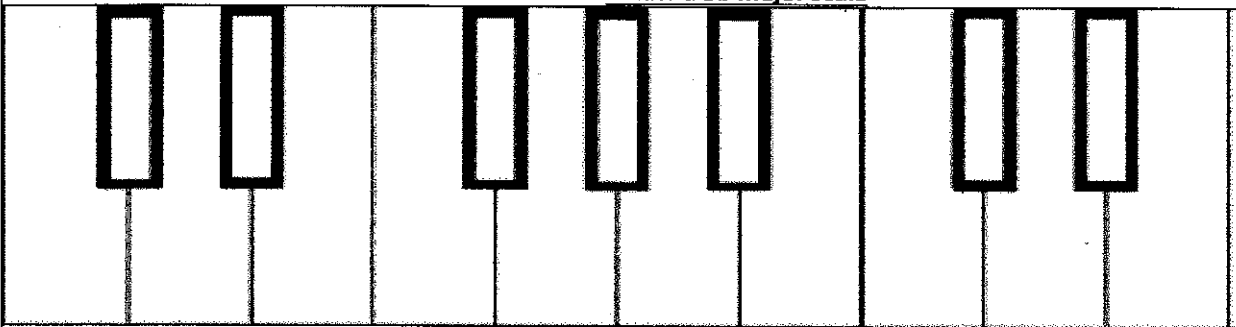
## Rhythm Exercises

1.

2.

3.

## Create a Bb Major Scale

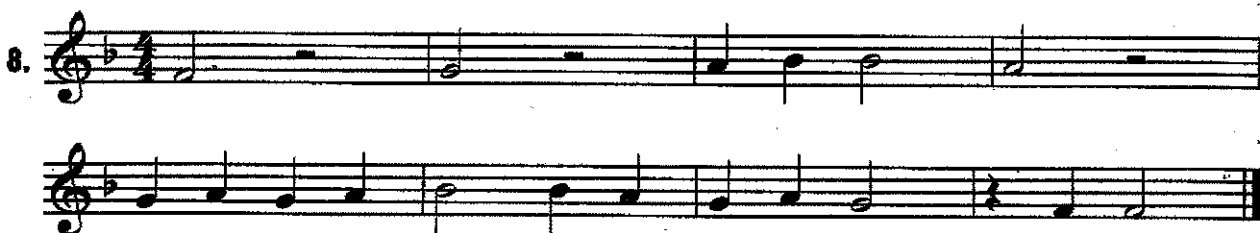


All notes on a keyboard are \_\_\_\_\_ apart

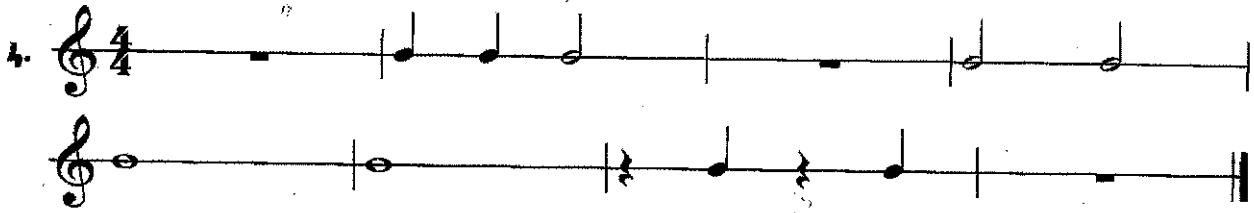
Major Scale Pattern= \_\_\_\_\_



Pitch Exercises



## Rhythm Exercises



### Eighth Note

Definition:  $\frac{1}{2}$  of a beat

Looks like a filled in note head

The stem can go up or down

The stem has one flag attached to it

2 eighth notes can be connected with a bar across

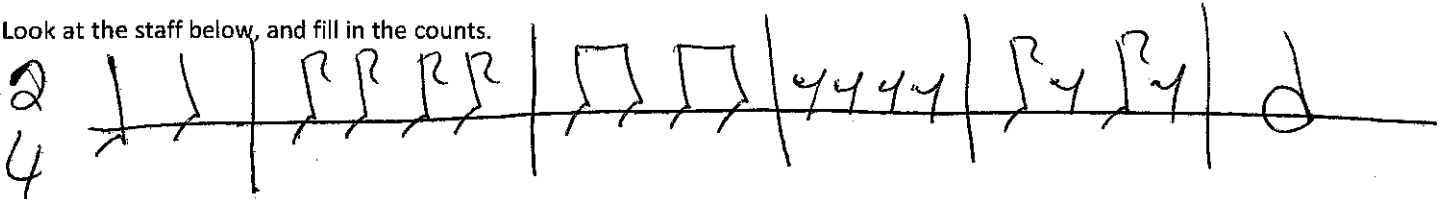
### Eighth Rest

Definition:  $\frac{1}{2}$  of a silent beat

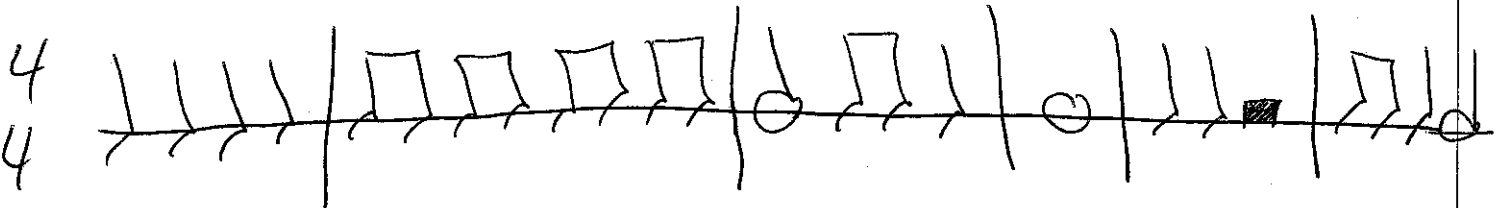
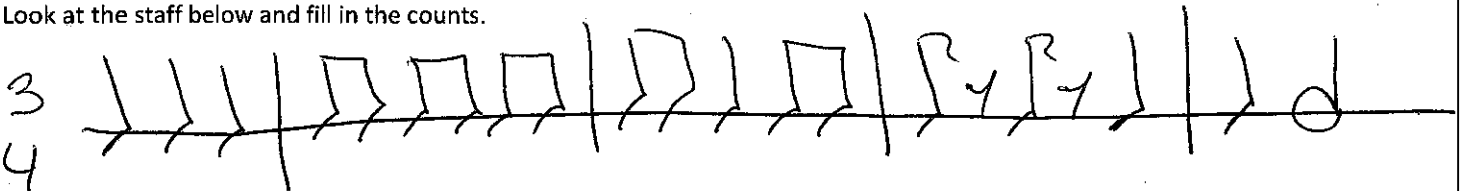
Looks like the number 7 with a dot on the end

Fits between the middle three lines of the staff

Look at the staff below, and fill in the counts.



Look at the staff below and fill in the counts.



1. 

**Rhythm Exercises**

2. 

3. 

**Pitch Exercises**

4. 

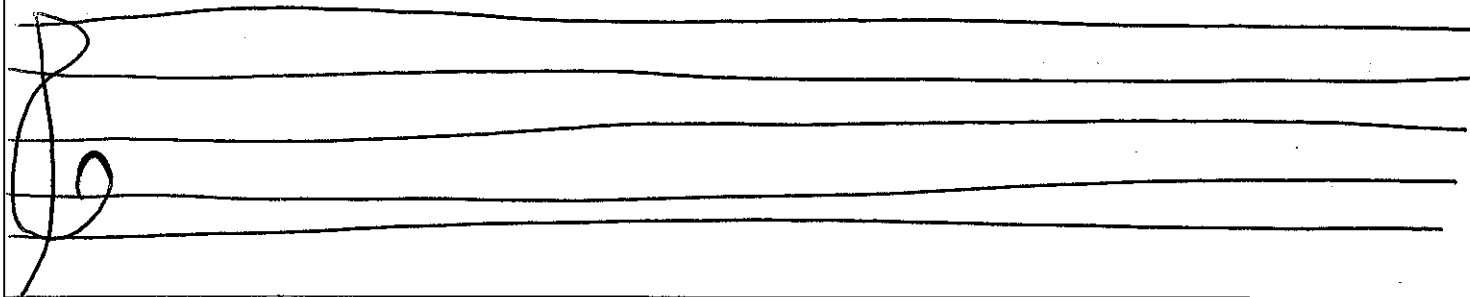
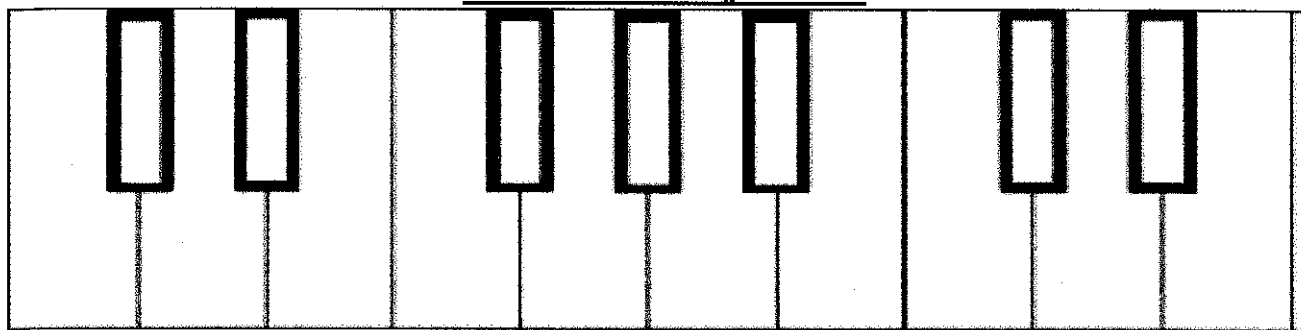
**Rhythm Exercises**

## Pitch Exercises



## Note Name Exercises

### Create the A Major Scale



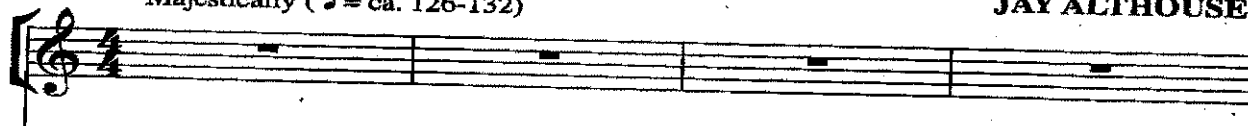
## Song of Joy

excerpt adapted from Alfred's Choral Designs series\*

Words and Music by  
**JAY ALTHOUSE**

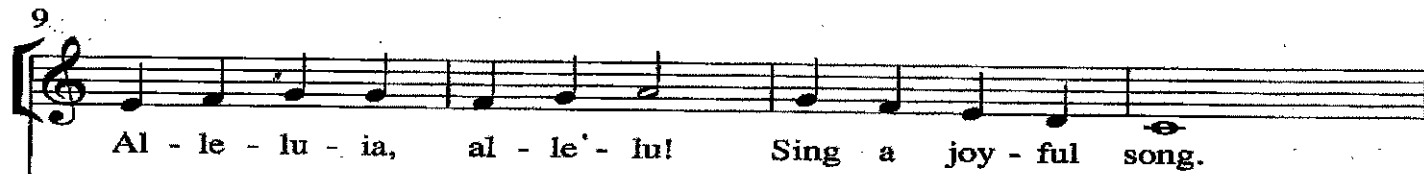
Majestically (♩ = ca. 126-132)

VOICES



Sing a joy - ful song.

Sing it loud and strong.



Al - le - lu - ia,

al - le' - lu!

Sing a joy - ful song.



Sing a song, al - le - lu.

Sing it strong.

**Staff=**

**Barline=**

**Double Barline=**

**Repeat Sign=**

**Top Number of Time Signature=**

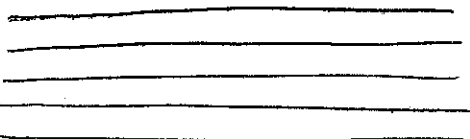
**Bottom Number of Time Signature=**

**What does each part of the time Signature Tell Me?**

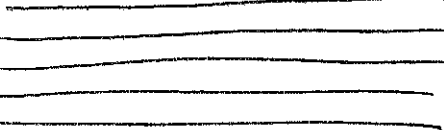
**Key Signature=**

**What notes are Sharp/or Flat?**

**Draw a Treble Clef below. Treble Clef is also known as the \_\_\_\_\_**



**Draw a Bass Clef below. Bass Clef is also known as the \_\_\_\_\_**



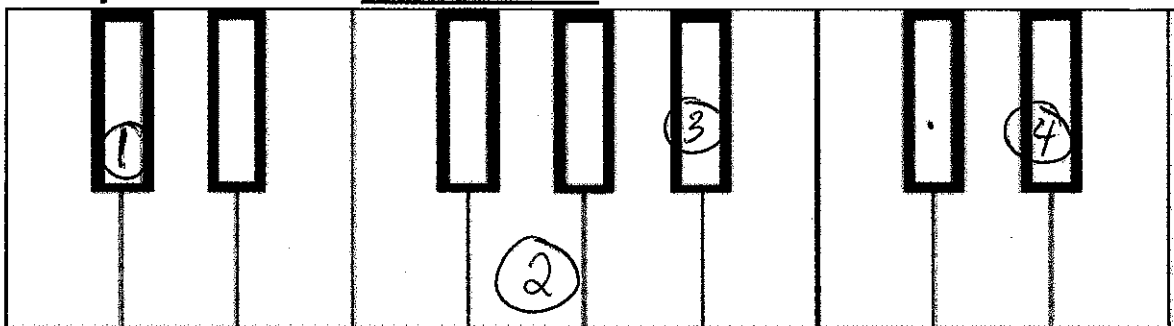
**Flat Sign= \_\_\_\_ =**

**Sharp Sign= \_\_\_\_ =**

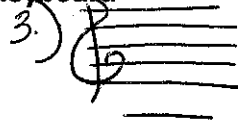
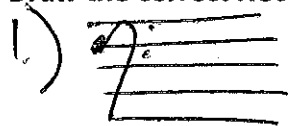
Enharmonic Notes=

Each Note on the keyboard is a \_\_\_\_\_ apart

The Major Scale Pattern is=



Draw the correct Note that is pictured on the keyboard



Create the F Major Scale

Create the G Major Scale

Create the Bb Major Scale

Create the Eb Major Scale



Write out the Correct Rhythms Below

2

4

3

4

4

4

2

4

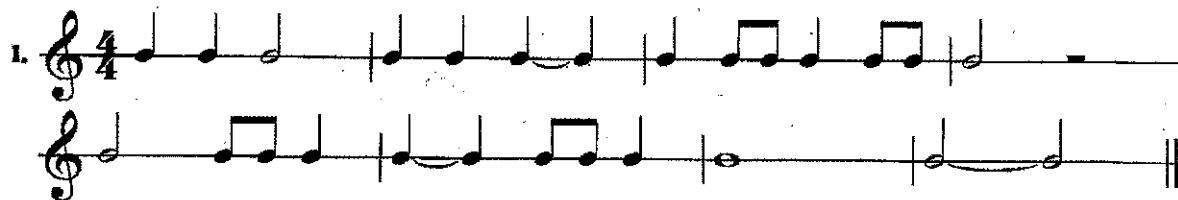
2

2

2<sup>nd</sup> Theory Quiz!

Don't forget your pencil and what you have worked on for each warm up from the beginning of the year.

## Rhythm Practice



### Dynamics=

Symbol	Name	Definition
pp		
p		
mp		
mf		
f		
ff		
Crescendo		
Decrescendo		

## Pitch Practice



2.

Musical notation for exercise 2, measures 1-4. The first staff has a treble clef and a 4/4 time signature. It contains four measures: Measure 1 has a half note G4 tied to the next measure; Measure 2 has a half note A4 tied to the next measure; Measure 3 has a quarter note B4, a quarter rest, and a quarter note C5; Measure 4 has a quarter note D5, a quarter rest, and a quarter note E5. The second staff also has a treble clef and contains four measures: Measure 1 has eighth notes G4-A4-B4-C5; Measure 2 has eighth notes D5-E5-F#5-G6; Measure 3 has eighth notes A6-B7-C8-D9; Measure 4 has a whole note G5.

Create the D $\flat$  Major Scale

The Major Scale Pattern is \_\_\_\_\_

A dot added to a note=

[illegible]

## **Note Names Practice**



## Note Names

## **REVIEW FOR FINAL QUIZ**

What is the definition of the staff?

Draw a staff below with 5 measures, draw an arrow to the barlines you draw in. Place a double Barline at the end of the last measure.

What does the double barline tell us to do?

What does a repeat sign tell us to do?

Draw a repeat sign:

What does the top number of the time signature tell us?

What does the bottom number of the time signature tell us?

Draw a staff with 3 measures and a double barline at the end. Draw in a treble clef at the beginning of the staff, and write a time signature with 4 beats per measure with the half note getting the beat.

3  
4

[illegible]

Symbol	How Many Beats	Name
	4 Beats	
	4 Silent Beats	
	2 Beats	
	2 Silent Beats	
	1 Beat	
	1 Silent Beat	
	$\frac{1}{2}$ Beat	
	$\frac{1}{2}$ Silent Beat	

\_\_\_\_\_

\_\_\_\_\_

\_\_\_\_\_

\_\_\_\_\_

\_\_\_\_\_

---

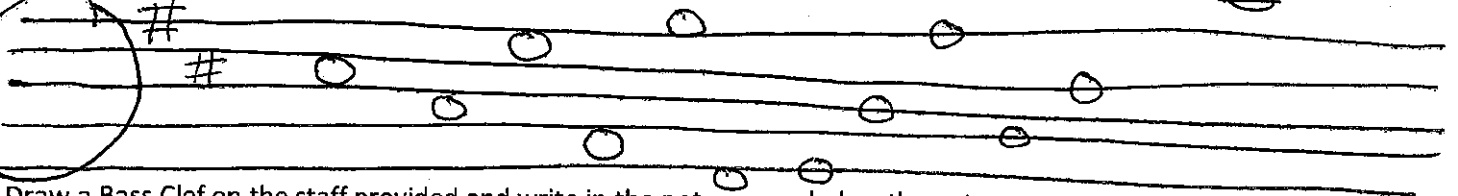
---

---

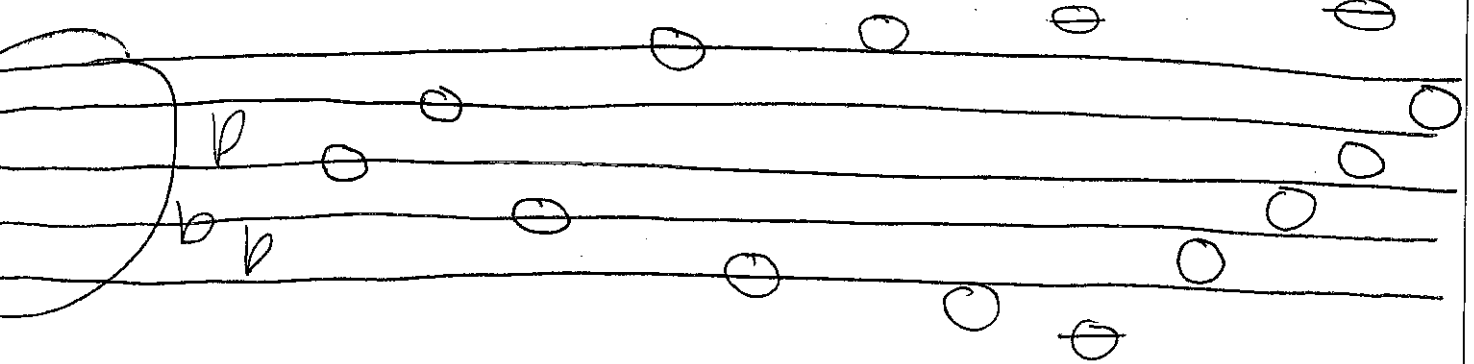
---

---

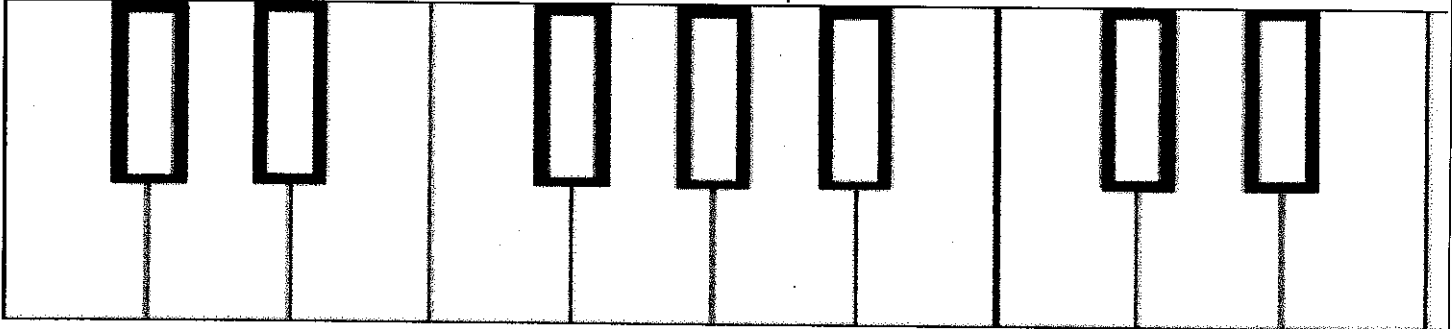
Draw a Treble clef on the staff provided and write in the note names below the notes



Draw a Bass Clef on the staff provided and write in the note names below the notes



On the Keyboard Below write in the note names on the correct key.



\_\_\_\_\_ is to the \_\_\_\_\_ of the 2 \_\_\_\_\_ keys

Each note on they keyboard is a \_\_\_\_\_ apart

The Major Scale Pattern is \_\_\_\_\_

What does a flat sign tell us to do?


What does a sharp sign tell us to do?

What are enharmonic Notes?

What is the definition of dynamics in music?



Complete the chart correctly.

<i>Italian Name</i>	<i>English Definition</i>	<i>Symbol</i>
Pianissimo		
	Very Loud	
		F
	soft	
Mezzo Piano		
	Medium Loud	
	Gradually Get Louder	
Decrescendo		