

STUDENT NAME:

CLASS HOUR:

7/8 Choir

Warm-Ups and References

Semester 1

2016-2017



Teacher: Ms. Anna Pulcer
Phone Number: (734)-955-1712
E-mail: apulcer@summit-academy.com

Week of September 5-September 9

Monday

Days Until Next Quiz 9

NO SCHOOL STILL SUMMER BREAK

Tuesday

Days Until Next Quiz 8

FIRST DAY OF SCHOOL ½ DAY

WELCOME TO THE MUSIC DEPARTMENT

Wednesday

Days Until Next Quiz 7

Definition of a musical *STAFF*=

Draw a Musical Staff and Label the Lines and Spaces Correctly

Thursday

Days Until Next Quiz 6

Definition of a *BARLINE*=

Definition of a *MEASURE*=

Draw a staff and label it correctly

Draw in 2 barlines which create _____ measures

Label the measures correctly

Friday

Days Until Next Quiz 5

Definition of a *DOUBLE BARLINE*=

Definition of a *REPEAT SIGN*=

Draw a staff and label it correctly.

Draw 1 barlines which creates _____ measures (label correctly)

Draw a double barline at the end of measure 2

Draw a repeat sign at the end of measure 1

Week of September 12-September 16

Monday

Days Until Next

Quiz 4

- Draw a staff and label it correctly
- Draw 3 barlines which creates _____ measures (label them correctly)
- Draw a double barline at the end of measure 4
- Draw a repeat sign at the end of measure 2

Tuesday

Days Until Next

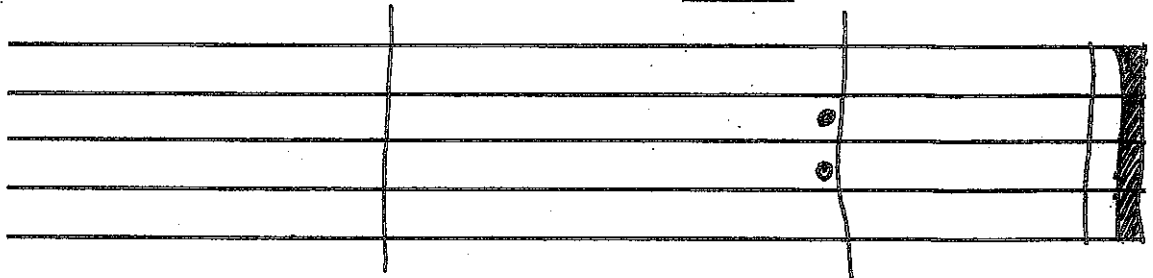
Quiz 3

First and 2nd Endings=

Da Capo=

Fine=

- Label the lines of the staff below
- Label the measures
- Circle the repeat sign in measure _____
- Draw an arrow to the Double Barline in measure _____



Below Describe how you play the music below.



Da Capo

FINE

Wednesday

Days Until Next Quiz

2

Definition of a staff=

Definition of a barline=

Definition of a measure=

Definition of a double barline=

Definition of a repeat sign=

Thursday

Days Until Next Quiz

1

REVIEW FOR QUIZ 1- QUIZ ONE IS TOMORROW FRIDAY!

Da Capo=

Fine=

- On the staff below
- Label the staff
- Create 4 measures (label the measure numbers)
- Draw a Double barline at the end of Measure 4
- Draw a repeat sign at the end of measure 2

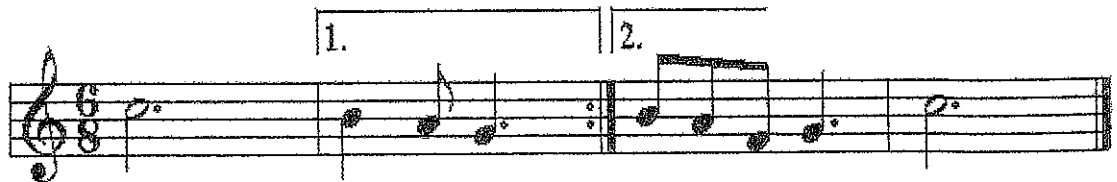
Friday

QUIZ DAY!!

STUDY UP!!!

0 Days
Until
Quiz!

Looking at the music below, describe to me how you would play this piece of music with the first and second ending.



Da Capo

FINE

Week of September 19-September 23

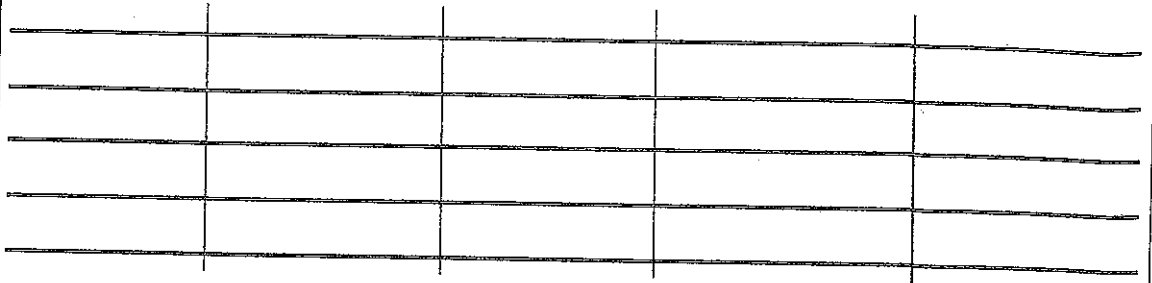
Monday

Definition of a Treble Clef=

Days Until Next

Quiz 28

On the staff below draw 1 treble clef in each measure



Tuesday

Musical Alphabet=

Days Until Next

Quiz 27

Because a Treble Clef is also known as the _____ Clef,
Treble Clef Notes Start with the note _____ on the _____ line

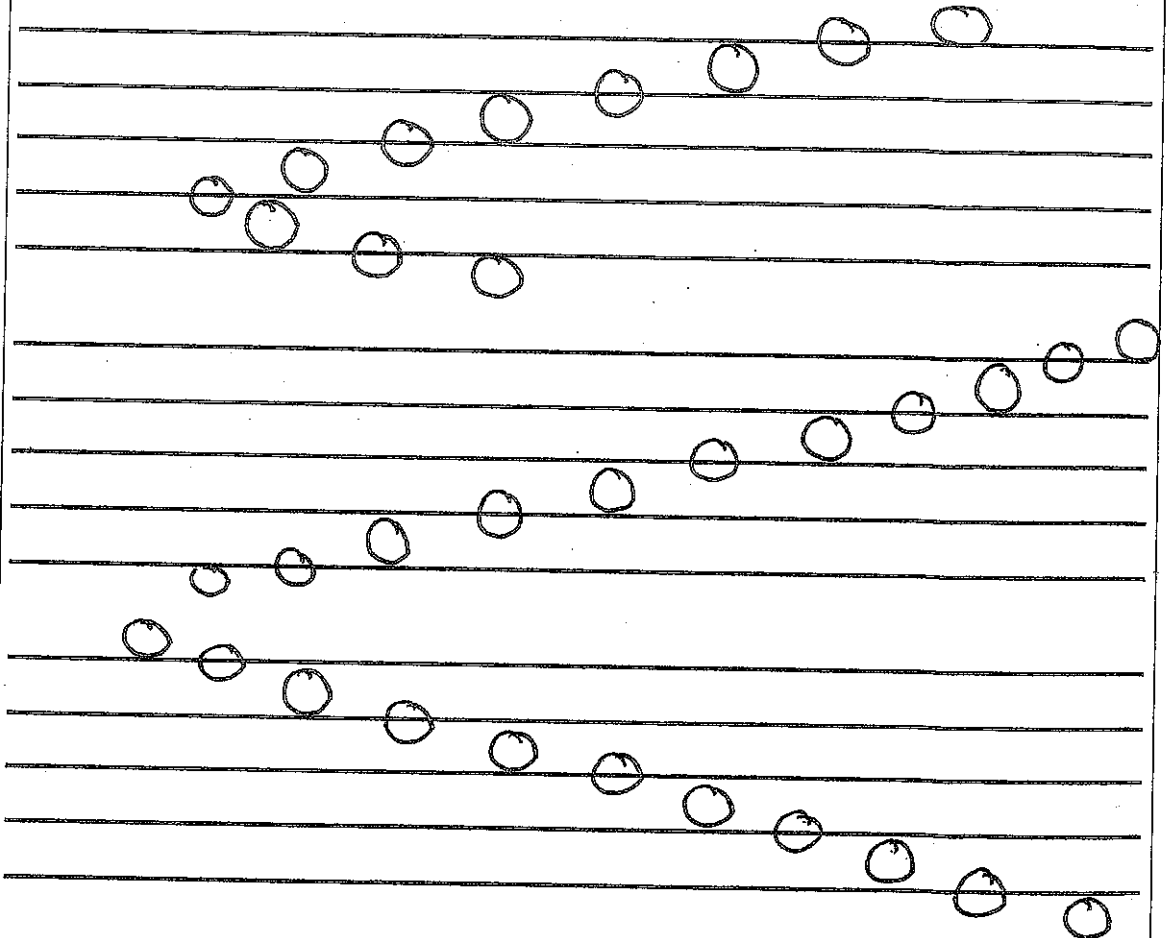
Up the staff=

Down the staff=

Draw a
Treble Clef →

Draw a
Treble Clef →

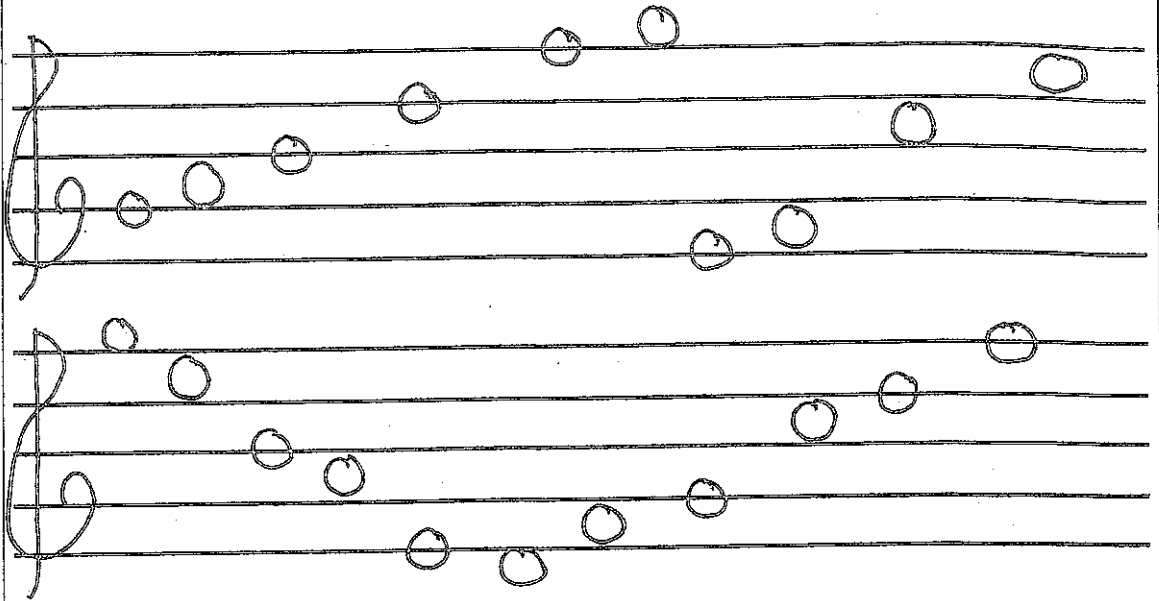
Draw a →
Treble Clef



Wednesday

Natural Sign looks like _____ and the definition is=

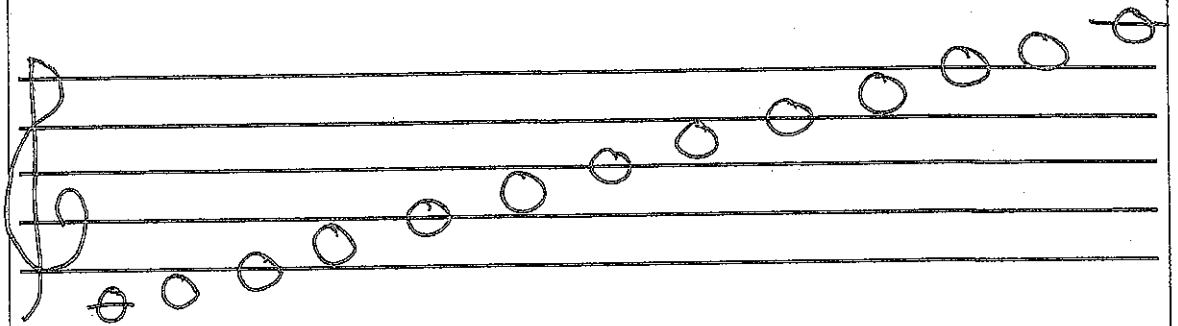
Days Until Next Quiz 26



Thursday

Ledger Lines=

Days Until Next Quiz 25

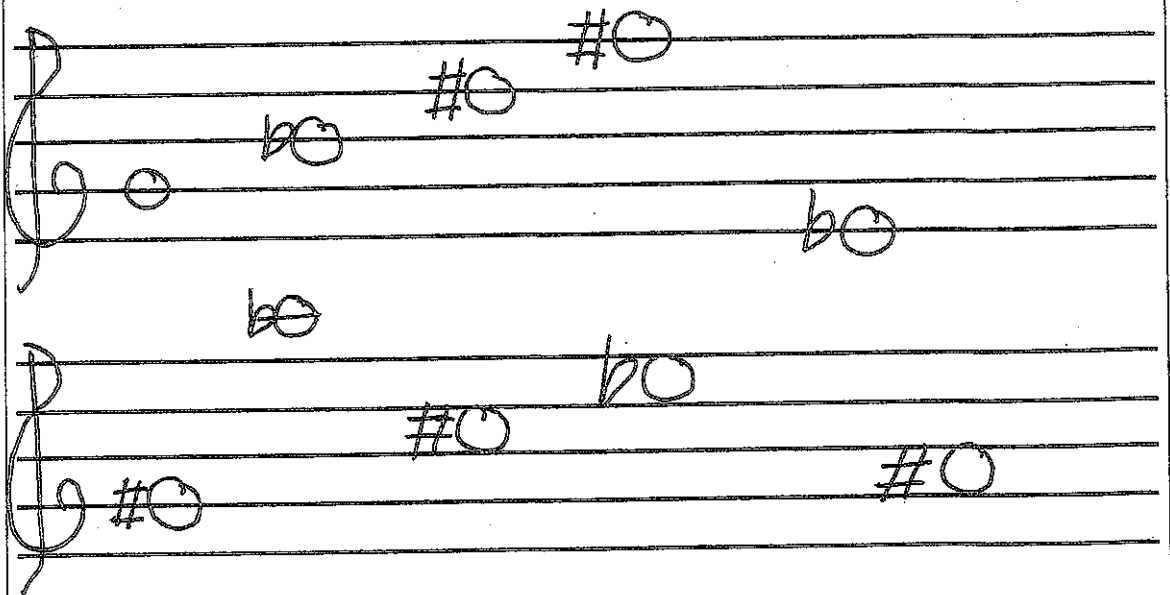


Friday

Flat Sign looks like _____ and the definition is=

Days Until Next Quiz 24

Sharp Sign looks like _____ and the definition is=



Week of September 26-September 30

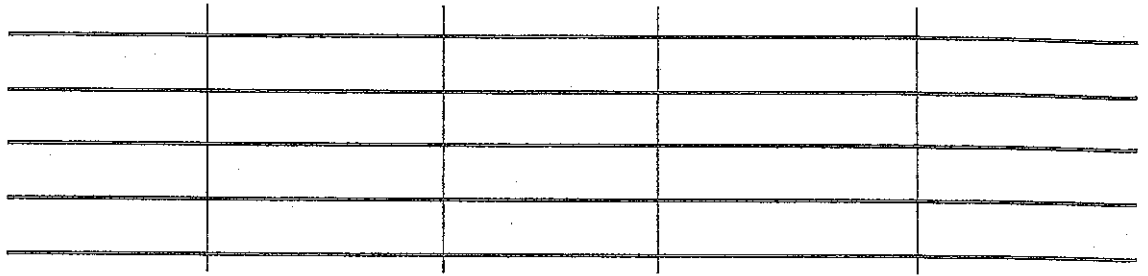
Monday

Definition of a Bass Clef=

Days Until Next

Quiz 23

On the staff below draw 1 bass clef in each measure



Tuesday

Musical Alphabet=

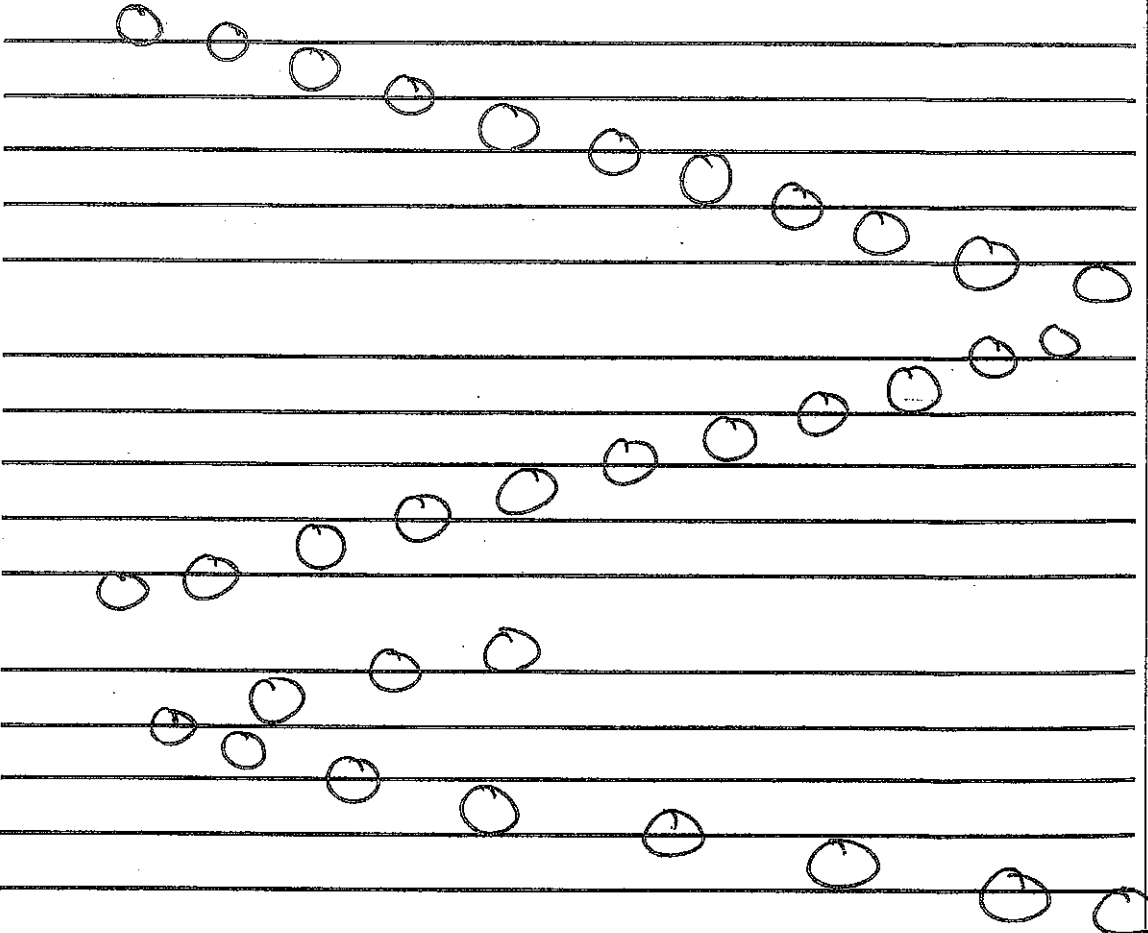
Days Until Next

Quiz 22

Because a Bass Clef is also known as the _____ Clef,
Bass Clef Notes Start with the note _____ on the _____ line

Up the staff=

Down the staff=



Draw a Bass Clef →

Draw a Bass Clef →

Draw a Bass Clef →

Wednesday

Natural Sign looks like _____ and the definition is=

Days Until Next Quiz 21

Handwritten musical notation on two staves. The first staff shows a treble clef with a colon and a series of natural notes (circles) ascending from the first line to the second space. The second staff shows a bass clef with a colon and a series of natural notes (circles) ascending from the second line to the first space.

Thursday

Ledger Lines=

Days Until Next Quiz 20

Handwritten musical notation on a single staff with a treble clef and a colon. The notes are placed on ledger lines both above and below the staff, showing an ascending scale.

Friday

Flat Sign looks like _____ and the definition is=

Days Until Next Quiz 19

Sharp Sign looks like _____ and the definition is=

Handwritten musical notation on two staves. The first staff shows a treble clef with a colon and notes with flat (b) and sharp (#) signs. The second staff shows a bass clef with a colon and notes with sharp (#) and flat (b) signs.

Week of October 3-October 7

Monday

Days Until Next Quiz 18

Key Signature=

Tuesday

Days Until Next Quiz 17

Write the correct Treble Clef Note name under each note (remember to check the key signature)

Draw a Treble Clef →

Wednesday

Days Until Next Quiz 16

Draw a Bass Clef →

Write the correct Bass Clef Note name under each note (remember to check the key signature)

Thursday

Days Until Next Quiz 15

Draw a Treble Clef →

Write the correct Treble Clef Note name under each note (remember to check the key signature)

Friday

Days Until Next Quiz 14

Draw a Bass Clef →

Write the correct Bass Clef Note name under each note (remember to check the key signature)

Week of October 10-October 14

Monday

Accidentals=

Days Until Next

Quiz 13

Accidental Rule 1=

Accidental Rule 2=

Handwritten musical notation on a grand staff. The treble clef has a key signature of one sharp (F#). The bass clef has a key signature of one flat (Bb). The music consists of two staves of notes with various accidentals.

Handwritten musical notation on a grand staff. The treble clef has a key signature of one sharp (F#). The bass clef has a key signature of one flat (Bb). The music consists of two staves of notes with various accidentals.

Tuesday

Write the correct Treble Clef Note names under each note
(remember to check the key signature and watch out for accidentals)

Days Until Next

Quiz 12

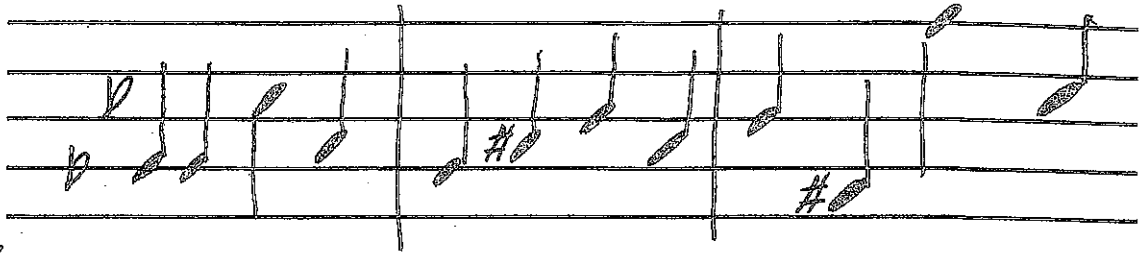
Handwritten musical notation on a grand staff. The treble clef has a key signature of one sharp (F#). The bass clef has a key signature of one flat (Bb). The music consists of two staves of notes with various accidentals.

Draw a
Treble
Clef

Wednesday

Days Until Next Quiz 11

Write the correct Bass Clef Note names under each note (remember to check the key signature and watch out for accidentals)

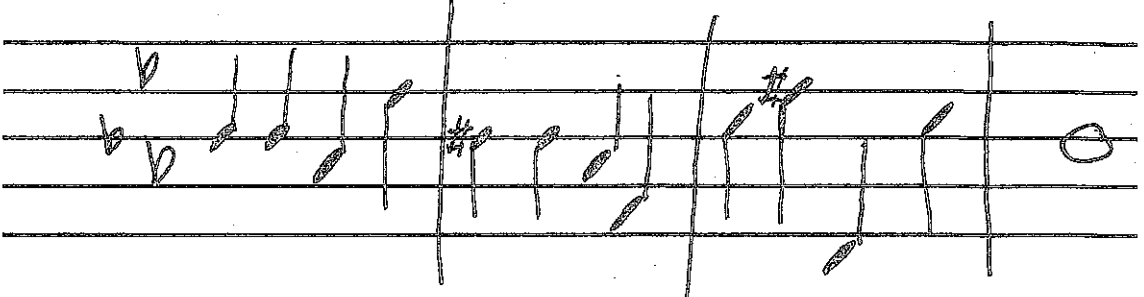


Draw a Bass Clef

Thursday

Days Until Next Quiz 10

Write the correct Treble Clef Note names under each note (remember to check the key signature and watch out for accidentals)

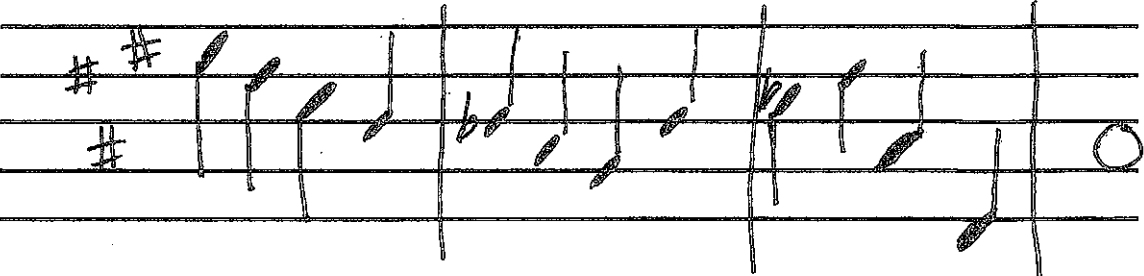


Draw a Treble Clef

Friday

Days Until Next Quiz 9

Write the correct Bass Clef Note names under each note (remember to check the key signature and watch out for accidentals)



Draw a Bass Clef

Week of October 17-October 21

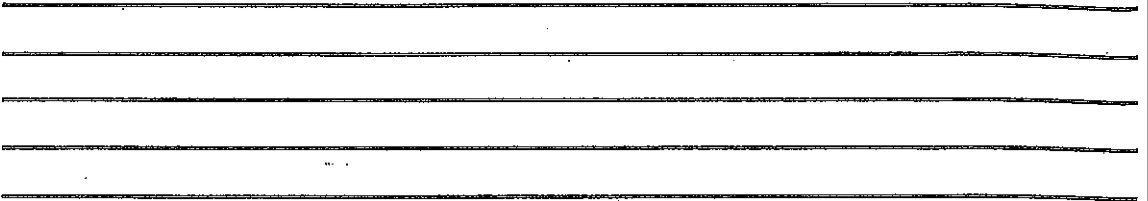
*****REVIEW FOR QUIZ 2*****

Monday

Days Until Next Quiz

8

- Label the staff lines
- Create 5 measures (label measures)
- Draw a Repeat sign in measure 4
- Draw a Treble Clef in Measure 1
- Draw a Double Barline in Measure 5
- Draw a Treble Clef G Note in Measure 2
- Draw a Treble Clef Eb in Measure 3

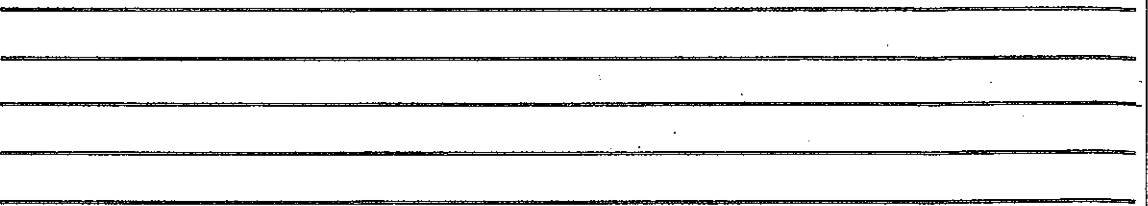


Tuesday

Days Until Next Quiz

7

- Label the staff lines
- Create 4 measures (label measures)
- Draw a Repeat sign in measure 3
- Draw a Bass Clef in Measure 1
- Draw a Double Barline in Measure 4
- Draw a Bass Clef F Note in Measure 2

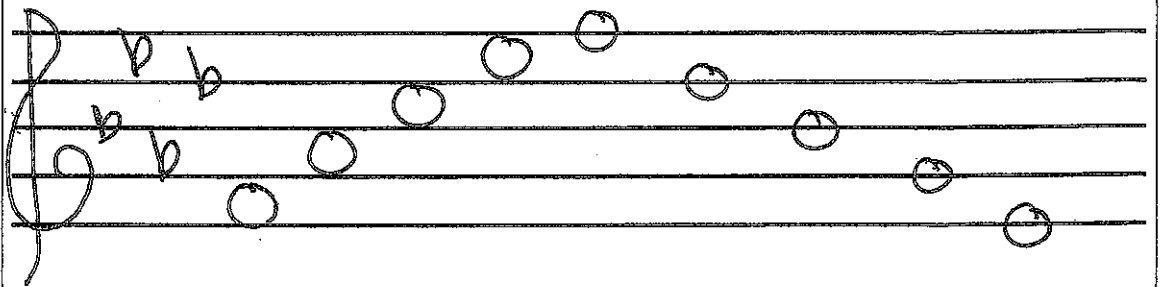


Wednesday

Days Until Next Quiz

6

Write the correct Treble Clef Note names under each note (remember to check the key signature and watch out for accidentals)



Thursday

Days Until Next

Quiz 5

Write the correct Bass Clef Note names under each note
(remember to check the key signature and watch out for accidentals)

Friday

Days Until Next

Quiz 4

1. Write in the correct note names under each note.
2. Describe to me how you would play the music below with the first and second ending.

Da Capo

FINE

Week of October 24-October 28


*****REVIEW FOR QUIZ 2*****

| | |
|--|---|
| <p>Monday</p> <p>Days Until Next Quiz 3</p> | <p>Definition of a staff=</p> <p>Definition of a barline=</p> <p>Definition of a measure=</p> <p>Definition of a double barline=</p> <p>Definition of a repeat sign=</p> |
| <p>Tuesday</p> <p>Days Until Next Quiz 2</p> | <p>Da Capo=</p> <p>Fine=</p> <ul style="list-style-type: none">• On the staff below• Label the staff• Create 5 measures (label the measure numbers)• Draw a Double barline at the end of Measure 5• Draw a repeat sign at the end of measure 2• A Treble clef in Measure 1• Treble Note C# in Measure 3• Treble Note Bb in Measure 4 <hr/> <hr/> <hr/> <hr/> <hr/> |


Wednesday

Days Until Next Quiz

1

A Treble Clef looks like 

A Treble Clef is also known as _____ Clef

A Bass Clef looks like 

A Bass Clef is also known as _____ Clef

A Sharp Sign looks like _____ and the definition is=

A Flat Sign looks like _____ and the definition is=

A Natural Sign looks like _____ and the definition is=

A ledger line is=

A Key Signature=

An Accidental=

Accidental Rule #1=

Accidental Rule #2=

Thursday

0

Days Until Next Quiz

*******QUIZ 2*******

Friday

30

Days Until Next Quiz

*******NO WARM-UPS*******

Week of October 31-November 4

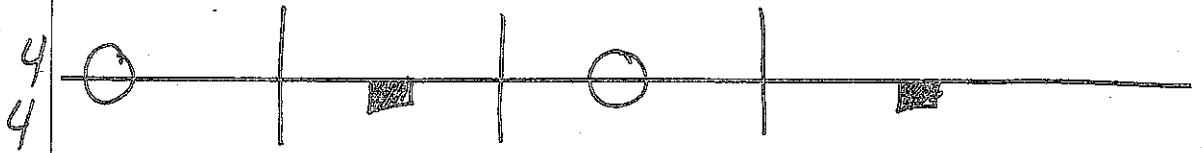
Monday

Days Until Next Quiz

29

Whole Note =

Whole Rest =



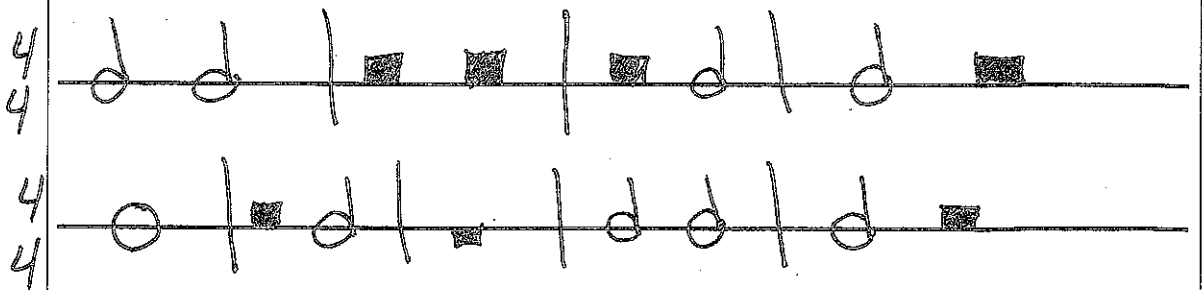
Tuesday

Days Until Next Quiz

28

Half Note =

Half Rest =



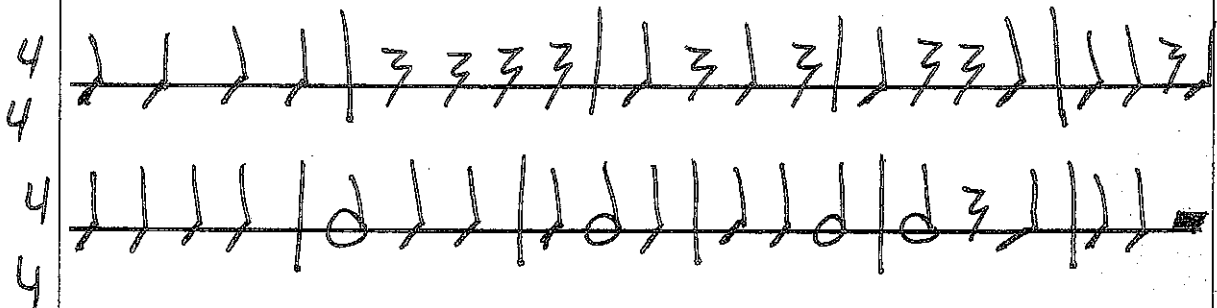
Wednesday

Days Until Next Quiz

27

Quarter Note =

Quarter Rest =



Thursday

Eighth Note =

Days Until Next

Quiz 26

Eighth Rest =

4
4

4
4

Friday

Write the correct counts in under each note

Days Until Next

Quiz 25

END OF QUARTER 1

HALF DAY

4
4

4
4

4
4

Thursday

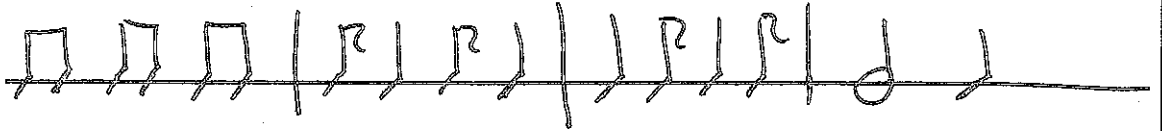
SYNCOPATION RHYTHMS

Days Until Next Quiz

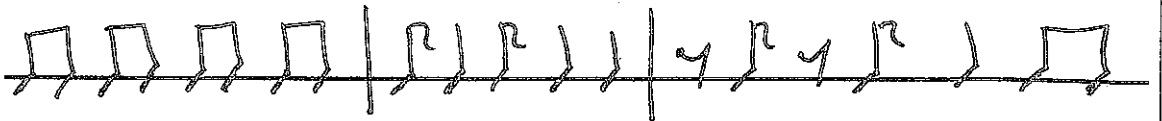
2
4



3
4



4
4



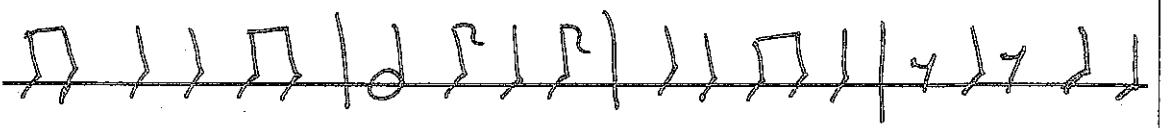
16

Friday

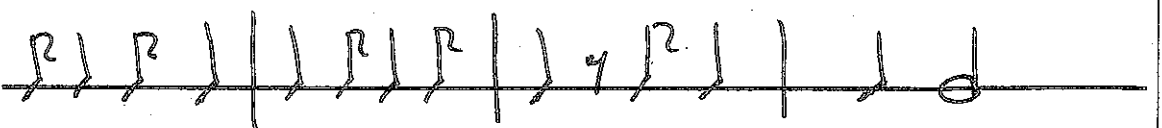
TIME SIGNATURE/SYNCO RHYTHMS

Days Until Next Quiz

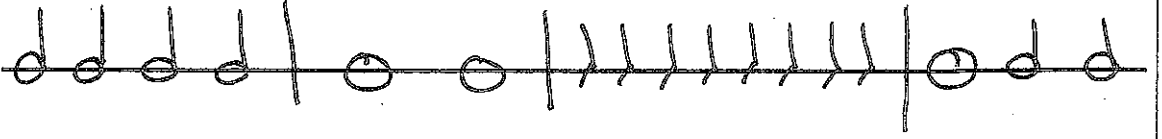
4
4



3
4



4
2



15

Week of November 28-December 2

REVIEW FOR QUIZ 3

Monday

Days Until Next Quiz

Time Signature

Top Number Time Signature=

Bottom Number Time Signature=

| | |
|---|---|
| 2 | 3 |
| 4 | 4 |
| 4 | 2 |
| 4 | 2 |
| 3 | 4 |
| 2 | 2 |

TIME SIGNATURE/SYNCO RHYTHMS/DOT RHYTHMS

COMPLETE RHYTHM CHART


| NOTE NAME | SYMBOL | NUMBER OF COUNTS |
|-----------|--------|------------------|
| | | 1/2 beat |
| | | 1 beat |
| | | 2 beats |
| | | 4 beats |
| | | 1/2 silent |
| | | 1 silent |
| | | 2 silent |
| | | 4 silent |

Tuesday

Days Until Next Quiz

A Treble Clef looks like 

A Treble Clef is also known as _____ Clef

A Bass Clef looks like 

A Bass Clef is also known as _____ Clef

A Sharp Sign looks like _____ and the definition is=

A Flat Sign looks like _____ and the definition is=

A Natural Sign looks like _____ and the definition is=

A ledger line is=

A Key Signature=

An Accidental=

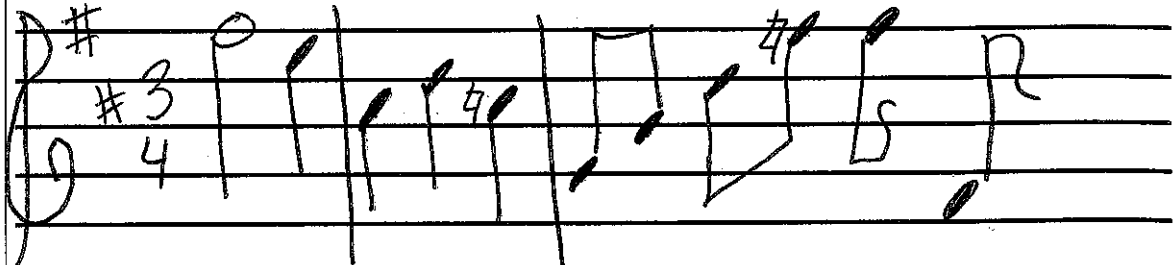
Accidental Rule #1=

Accidental Rule #2=

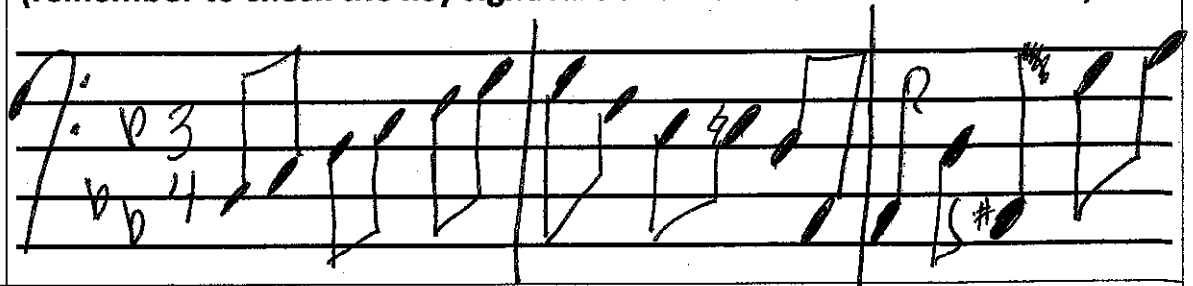
Wednesday

Days Until Next Quiz

Write the correct Treble Clef Note names under each note (remember to check the key signature and watch out for accidentals)



Write the correct Bass Clef Note names under each note (remember to check the key signature and watch out for accidentals)



**Thursday
QUIZ DAY!!!!**

NO WARMUP FRIDAY

| | | | | |
|----------------|--------------------|---|----------------|------------------|
| Staff | Treble Clef/Notes | Repeat Sign | Notes/Rests | Half Notes/Rests |
| Barline | Bass Clef/Notes | 1 st 2 nd Endings | Syncopated | Quarter |
| Measures | Natural/Sharp/Flat | Key Signature | Rhythms | Notes/Rests |
| Double Barline | Notes | Accidentals | Dotted Rhythms | Eighth |
| | Whole Notes/Rests | | | Time Signature |

Week of December 5-December 9

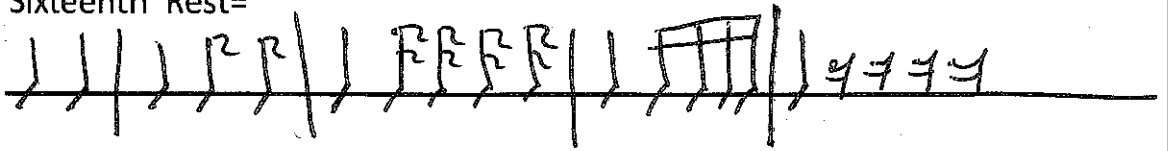
Monday

Sixteenth Note =

Days Until Next Quiz

Sixteenth Rest =

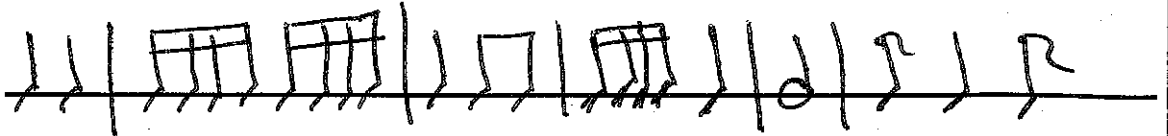
2
4



Tuesday

Days Until Next Quiz

2
4

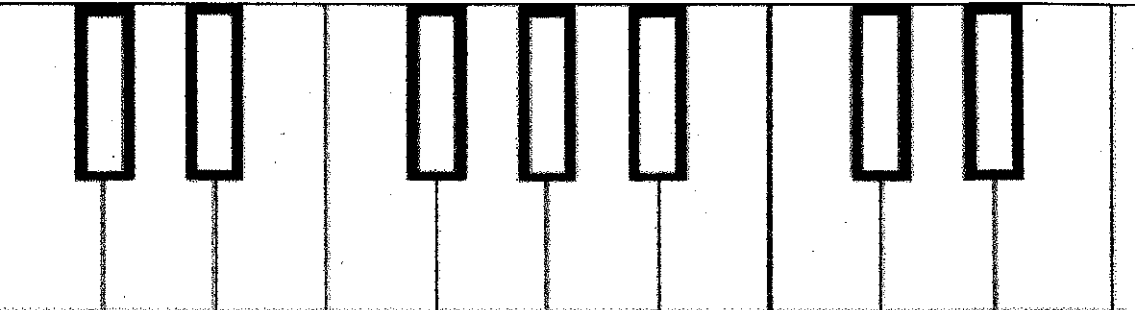


3
4



Wednesday

Days Until Next Quiz



The note _____ is to the _____ of the 2 _____ Keys

Natural Notes look like _____ and the definition =

Musical Alphabet =

Week of December 12-December 16

Monday

Days Until Next Quiz



The note _____ is to the _____ of the 2_____ Keys

Natural Notes look like _____ and the definition=

Sharp Notes look like _____ and the definition=

Flat Notes Look like _____ and the definition=

Enharmonic Notes=

Tuesday

Days Until Next Quiz

Articulations=

Complete the Articulation Chart

| Articulation Name | SYMBOL | Definition |
|-------------------|--------|------------|
| Tenuto | | |
| Staccato | | |
| Accent | | |
| Marcato | | |

Wednesday

Days Until Quiz

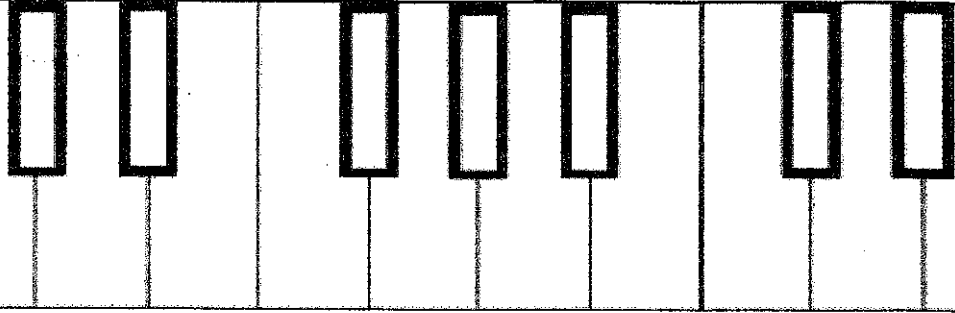
Dynamics=

Complete the Dynamic Chart

| Dynamic Name | SYMBOL | Definition |
|--------------|--------|------------|
| Pianissimo | | |
| Piano | | |
| Mezzo Piano | | |
| Mezzo Forte | | |
| Forte | | |
| Fortissimo | | |
| Crescendo | | |
| Decrescendo | | |

Thursday

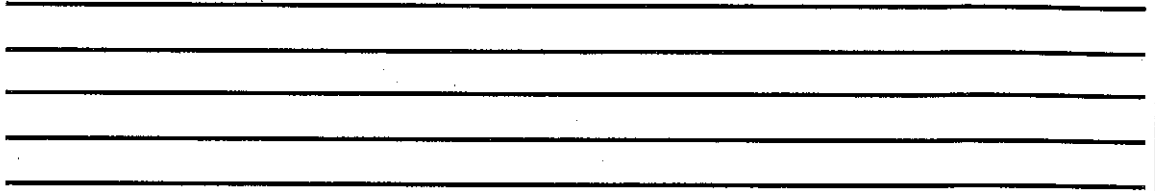
Days Until Next Quiz



The note _____ is to the _____ of the 2 _____ Keys
Enharmonic Notes=

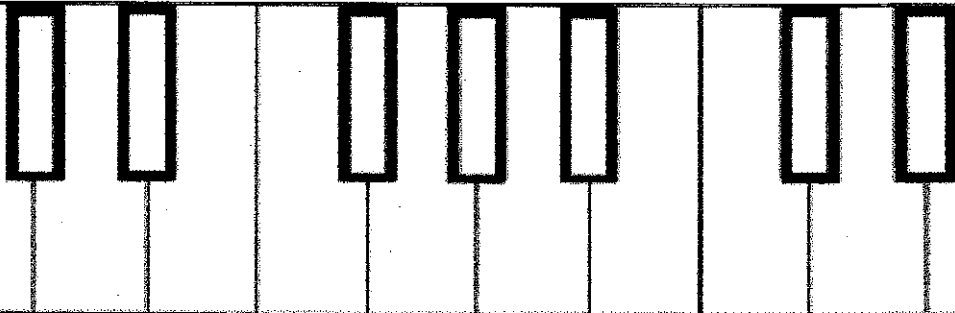
Major Scale Pattern= _____

Create the Bb Major Scale



Friday

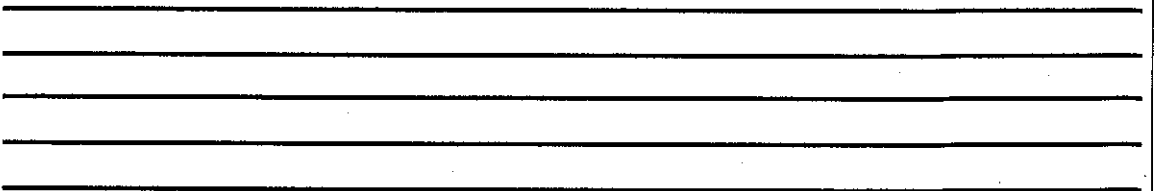
Days Until Next Quiz



The note _____ is to the _____ of the 2 _____ Keys
Enharmonic Notes=

Major Scale Pattern= _____

Create the G Major Scale



Week of December 19-December 23

Monday

Days Until Next Quiz

Sixteenth Rhythms

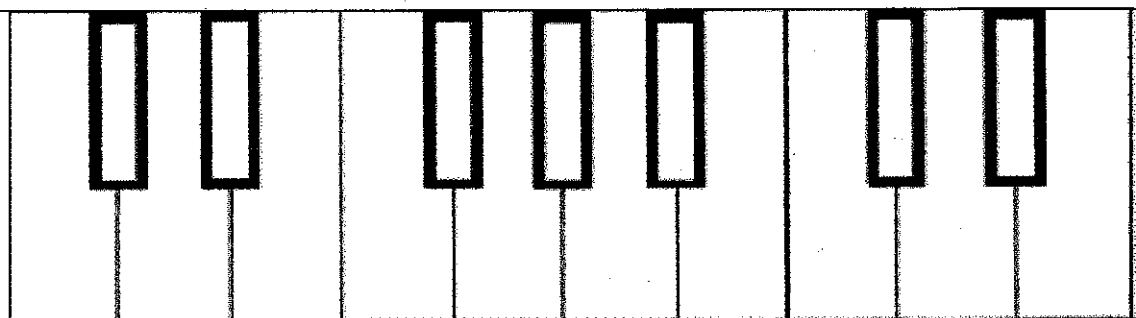
Tuesday

Days Until Next Quiz

Sixteenth Rhythms

Wednesday

Days Until Next Quiz



The note _____ is to the _____ of the 2 _____ Keys

Enharmonic Notes=

Major Scale Pattern= _____

Create the G Major Scale

| Thursday Days Until Next Quiz | Articulations= Complete the Articulation Chart <table border="1" style="width: 100%; border-collapse: collapse; text-align: center;"> <thead> <tr> <th style="width: 40%;">Articulation Name</th> <th style="width: 20%;">SYMBOL</th> <th style="width: 40%;">Definition</th> </tr> </thead> <tbody> <tr><td> </td><td>↓</td><td> </td></tr> <tr><td> </td><td>↓</td><td> </td></tr> <tr><td> </td><td>↓</td><td> </td></tr> <tr><td> </td><td>↓</td><td> </td></tr> </tbody> </table> | Articulation Name | SYMBOL | Definition | | ↓ | | | ↓ | | | ↓ | | | ↓ | | | | | | | | | | | | | |
|--|--|-------------------|--------|------------|--|----|--|--|----|--|--|---|--|--|---|--|--|----|--|--|----|--|--|---|--|--|---|--|
| Articulation Name | SYMBOL | Definition | | | | | | | | | | | | | | | | | | | | | | | | | | |
| | ↓ | | | | | | | | | | | | | | | | | | | | | | | | | | | |
| | ↓ | | | | | | | | | | | | | | | | | | | | | | | | | | | |
| | ↓ | | | | | | | | | | | | | | | | | | | | | | | | | | | |
| | ↓ | | | | | | | | | | | | | | | | | | | | | | | | | | | |
| Friday Days Until Next Quiz | Dynamics= Complete the Dynamic Chart <table border="1" style="width: 100%; border-collapse: collapse; text-align: center;"> <thead> <tr> <th style="width: 40%;">Dynamic Name</th> <th style="width: 20%;">SYMBOL</th> <th style="width: 40%;">Definition</th> </tr> </thead> <tbody> <tr><td> </td><td>ff</td><td> </td></tr> <tr><td> </td><td>pp</td><td> </td></tr> <tr><td> </td><td>f</td><td> </td></tr> <tr><td> </td><td>p</td><td> </td></tr> <tr><td> </td><td>mf</td><td> </td></tr> <tr><td> </td><td>mp</td><td> </td></tr> <tr><td> </td><td>≡</td><td> </td></tr> <tr><td> </td><td>≡</td><td> </td></tr> </tbody> </table> | Dynamic Name | SYMBOL | Definition | | ff | | | pp | | | f | | | p | | | mf | | | mp | | | ≡ | | | ≡ | |
| Dynamic Name | SYMBOL | Definition | | | | | | | | | | | | | | | | | | | | | | | | | | |
| | ff | | | | | | | | | | | | | | | | | | | | | | | | | | | |
| | pp | | | | | | | | | | | | | | | | | | | | | | | | | | | |
| | f | | | | | | | | | | | | | | | | | | | | | | | | | | | |
| | p | | | | | | | | | | | | | | | | | | | | | | | | | | | |
| | mf | | | | | | | | | | | | | | | | | | | | | | | | | | | |
| | mp | | | | | | | | | | | | | | | | | | | | | | | | | | | |
| | ≡ | | | | | | | | | | | | | | | | | | | | | | | | | | | |
| | ≡ | | | | | | | | | | | | | | | | | | | | | | | | | | | |

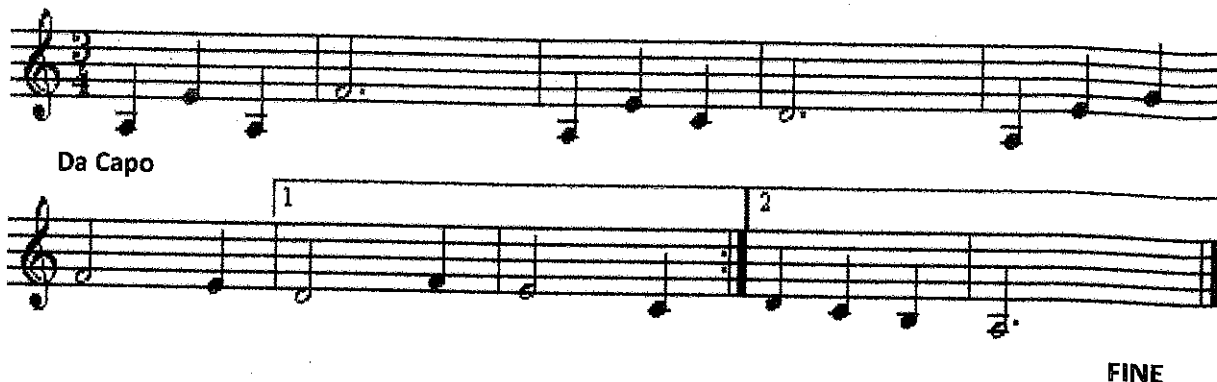
WINTER BREAK! DECEMBER 24-JANUARY 9th

DURING WINTER BREAK COMPLETE YOUR PRACTICE RECORD

CAN BE FOUND ON THE WEBSITE, AND THE BACK OF YOUR WARM-UP PACKET

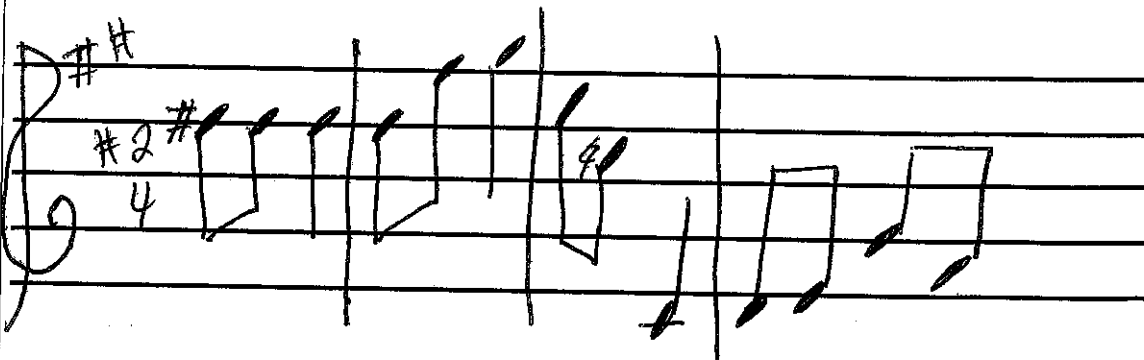
Week of January 9-January 13
*****REVIEW FOR MIDTERM EXAM*****

| | |
|--|---|
| <p>Monday</p> <p>Days Until Next Quiz</p> | <p>Definition of the staff=</p> <p>Definition of a Barline=</p> <p>Definition of a Measure=</p> <p>Definition of a Repeat Sign=</p> <p>Definition of a Double Barline=</p> <p>Da Capo Means=</p> <p>Fine Means=</p> |
| <p>Tuesday</p> <p>Days Until Next Quiz</p> | <p>Below on the staff provided:</p> <p>Label the staff correctly (lines and spaces)</p> <p>Create 3 measures (Label correctly)</p> <p>Draw a repeat sign at the end of measure 1</p> <p>Draw a double barline at the end of measure 3</p> <hr/> <hr/> <hr/> <hr/> <hr/> |
| <p>Wednesday</p> <p>Days Until Next Quiz</p> | <p>Treble Clef is also known as the _____ Clef</p> <p>Bass Clef is also known as the _____ Clef</p> <p>Draw the Treble Clef</p> <hr/> <hr/> <hr/> <hr/> <p>Draw the Bass Clef</p> <hr/> <hr/> <hr/> <hr/> |

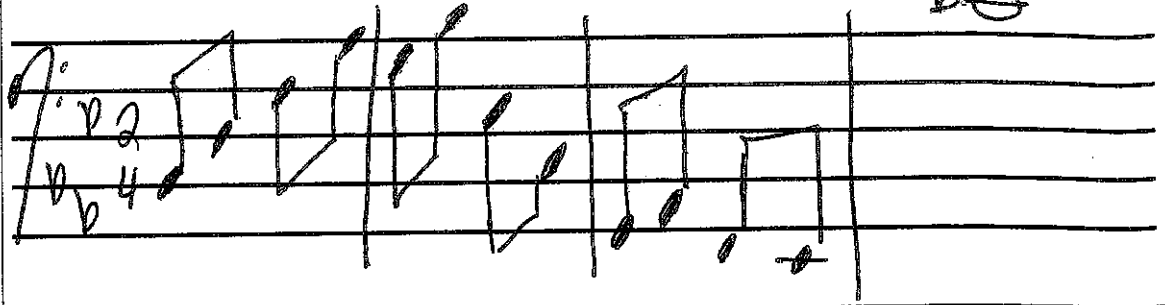
| | |
|---|---|
| <p>Thursday</p> <p>Days Until Next Quiz</p> | <p>Melanchly Waltz</p>  <p>Da Capo</p> <p>1</p> <p>2</p> <p>FINE</p> |
| <p>Friday</p> <p>Days Until Next Quiz</p> | <p>A Ledger Line=</p> <p>A Key Signature=</p> <p>An Accidental=</p> <p>Accidental Rule #1=</p> <p>Accidental Rule #2=</p> |

Week of January 16-January 20

*****Review for Midterm Exam**

| | |
|---|--|
| <p>Monday</p> <p>Days Until Next Quiz</p> <p>NO SCHOOL</p> | <p>Write the correct Treble Clef Note names under each note (remember to check the key signature and watch out for accidentals)</p>  |
|---|--|

Write the correct Bass Clef Note names under each note
(remember to check the key signature and watch out for accidentals)



Tuesday

Days Until Next Quiz

Articulations=

Complete the Articulation Chart

| Articulation Name | SYMBOL | Definition |
|-------------------|--------|--------------------|
| | | smooth + connected |
| | | short + separated |
| | | emphasize |
| | | accent + staccato |

Dynamics=

Complete the Dynamic Chart

| Dynamic Name | SYMBOL | Definition |
|--------------|--------|--------------------------------|
| | | medium loud |
| | | medium soft |
| | | loud |
| | | soft |
| | | very soft very soft |
| | | very fast |
| | | gradually louder |
| | | gradually softer |

Wednesday

Days Until Next Quiz

| NOTE NAME | SYMBOL | NUMBER OF COUNTS |
|-----------|--------|------------------|
| | ○ | |
| | ∩ | |
| | ∪ | |
| | ∩ | |
| | ∪ | |
| | ■ | |
| | ■ | |
| | 3 | |
| | 4 | |
| | 4 | |

Thursday

Days Until Next Quiz

Time Signature

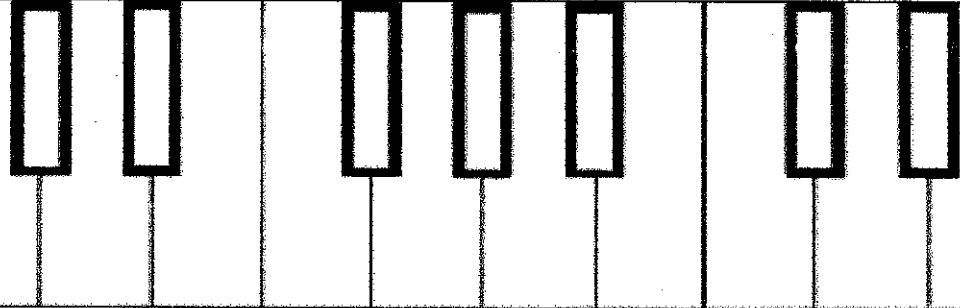
Top Number Time Signature=

Bottom Number Time Signature=

| | |
|-----|-----|
| 4 - | 2 - |
| 4 - | 4 - |
| 3 - | 2 - |
| 4 - | 2 - |
| 3 - | 4 - |
| 2 - | 2 - |

Friday

Days Until Next Quiz



The note _____ is to the _____ of the 2 _____ Keys

Natural Notes look like _____ and the definition=

Sharp Notes look like _____ and the definition=

Flat Notes Look like _____ and the definition=

Enharmonic Notes=

Create the Ab Major Scale

Create the Eb Major Scale

Week of January 23-January 27

*****REVIEW FOR MIDTERM*****

| | |
|--|--|
| <p>Monday</p> <p>Days Until Next Quiz</p> | <p>RHYTHMS</p> |
| <p>Tuesday</p> <p>Days Until Next Quiz</p> | <p>RHYTHMS</p> |
| <p>Wednesday</p> <p>Days Until Next Quiz</p> | <p align="center">***MIDTERM EXAM***</p> |
| <p>Thursday</p> <p>Friday</p> | <p align="center">NO WARM UPS END OF QUARTER 2 HALF DAY FRIDAY</p> |