

STUDENT NAME:

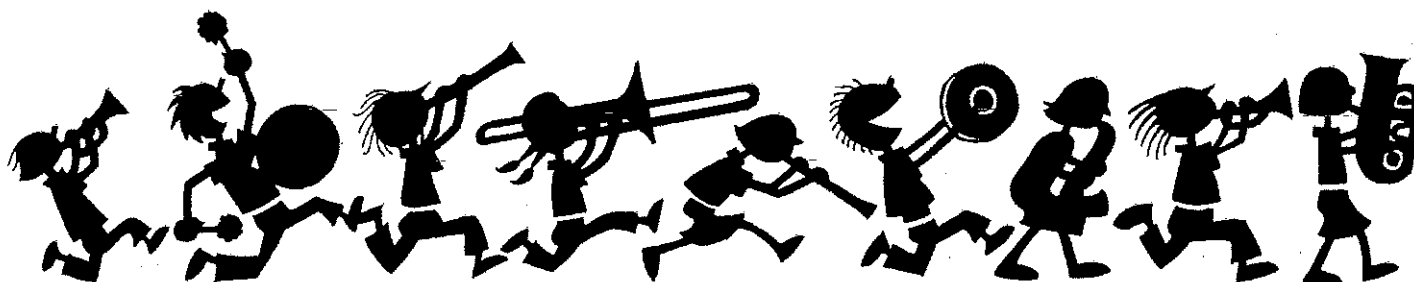
CLASS HOUR:

Beginning Band

Warm-Ups and References

Semester 1

2016-2017



Teacher: Ms. Anna Pulcer

Room Number:

Phone Number: (734)-955-1712

E-mail: apulcer@summit-academy.com

Week of September 5-September 9

Monday Days Until Next Quiz 9	NO SCHOOL STILL SUMMER BREAK
Tuesday Days Until Next Quiz 8	FIRST DAY OF SCHOOL ½ DAY WELCOME TO THE MUSIC DEPARTMENT
Wednesday Days Until Next Quiz 7	Definition of a musical STAFF = Draw a Musical Staff and Label the Lines and Spaces Correctly
Thursday Days Until Next Quiz 6	Definition of a BARLINE = Definition of a MEASURE = Draw a staff and label it correctly Draw in 2 barlines which create _____ measures Label the measures correctly
Friday Days Until Next Quiz 5	Definition of a DOUBLE BARLINE = Definition of a REPEAT SIGN = Draw a staff and label it correctly. Draw 1 barlines which creates _____ measures (label correctly) Draw a double barline at the end of measure 2 Draw a repeat sign at the end of measure 1

Week of September 12-September 16

Monday

Days Until Next

Quiz 4

- Draw a staff and label it correctly
- Draw 3 barlines which creates _____ measures (label them correctly)
- Draw a double barline at the end of measure 4
- Draw a repeat sign at the end of measure 2

Tuesday

Days Until Next

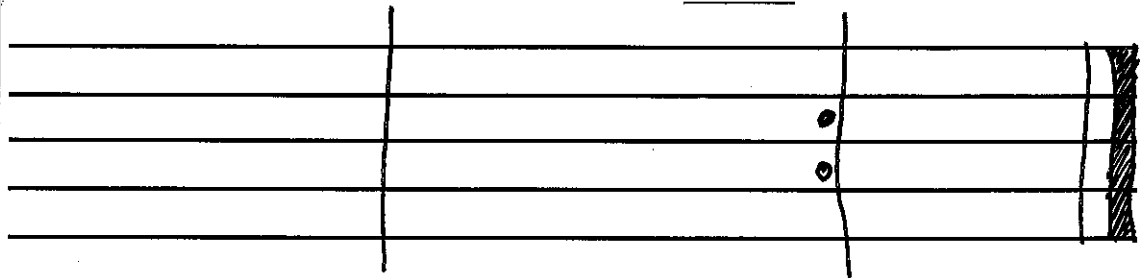
Quiz 3

First and 2nd Endings=

Da Capo=

Fine=

- Label the lines of the staff below
- Label the measures
- Circle the repeat sign in measure _____
- Draw an arrow to the Double Barline in measure _____



Below Describe how you play the music below.



Da Capo

FINE

Wednesday

Days Until Next Quiz

2

Definition of a staff=

Definition of a barline=

Definition of a measure=

Definition of a double barline=

Definition of a repeat sign=

Thursday

Days Until Next Quiz

1

REVIEW FOR QUIZ 1- QUIZ ONE IS TOMORROW FRIDAY!

Da Capo=

Fine=

- On the staff below
- Label the staff
- Create 4 measures (label the measure numbers)
- Draw a Double barline at the end of Measure 4
- Draw a repeat sign at the end of measure 2

Friday

QUIZ DAY!!

STUDY UP!!!

0 Days
Until
Quiz!

Looking at the music below, describe to me how you would play this piece of music with the first and second ending.



Da Capo

FINE

Week of September 19-September 23

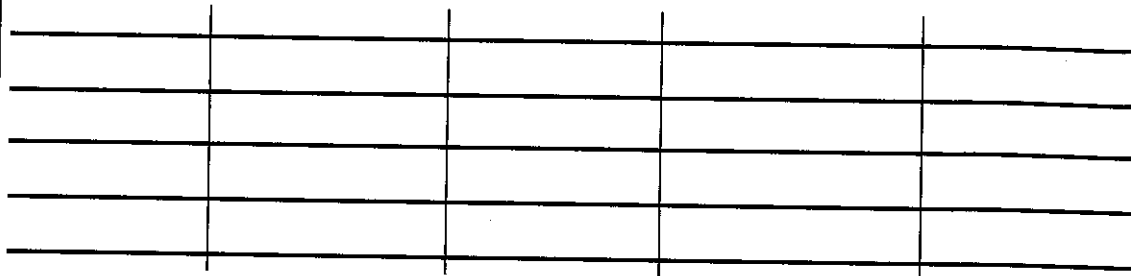
Monday

Days Until Next

Quiz 28

Definition of a Treble Clef=

On the staff below draw 1 treble clef in each measure



Tuesday

Days Until Next

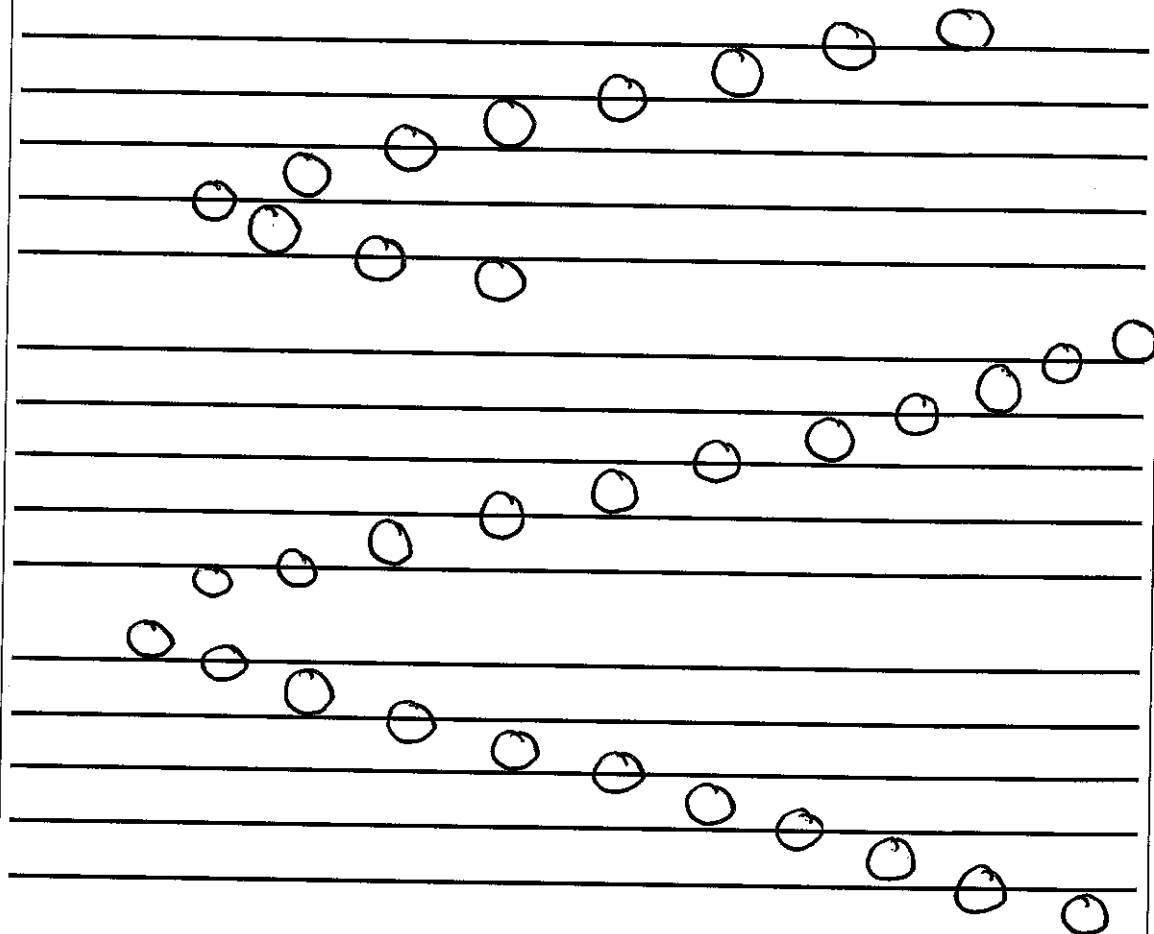
Quiz 27

Musical Alphabet=

Because a Treble Clef is also known as the _____ Clef,
Treble Clef Notes Start with the note _____ on the _____ line

Up the staff=

Down the staff=



Draw a
Treble Clef →

Draw a
Treble Clef →

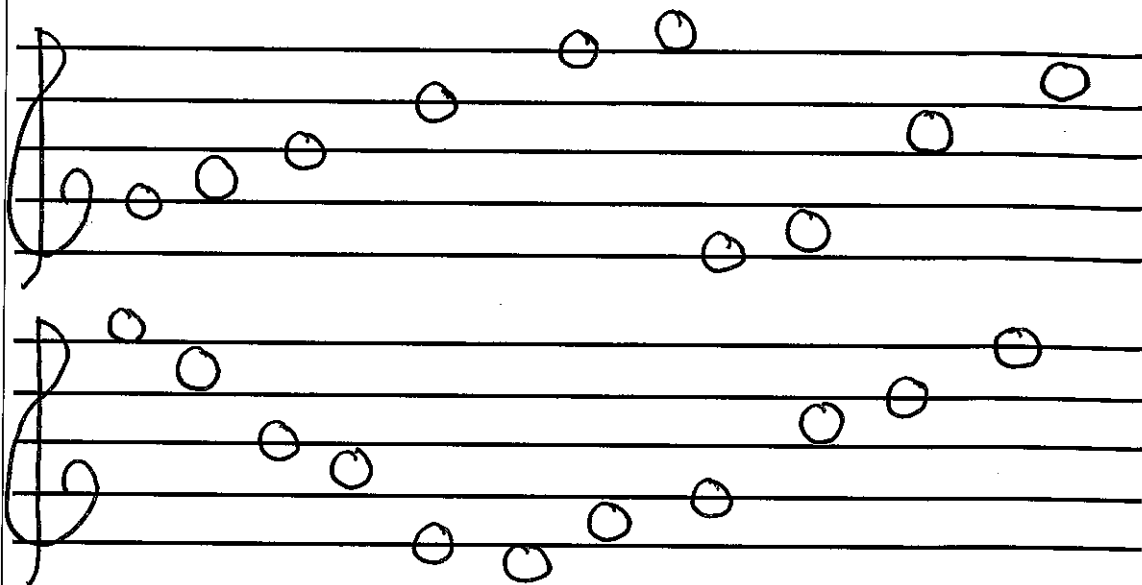
Draw a →
Treble Clef

Wednesday

Natural Sign looks like _____ and the definition is=

Days Until Next

Quiz 26

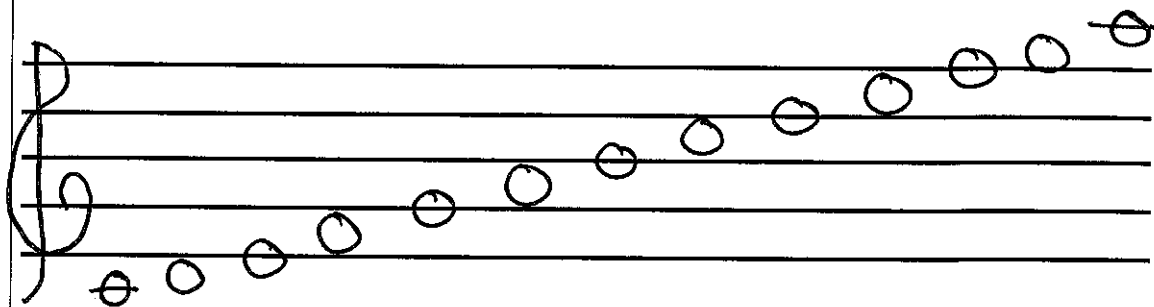


Thursday

Ledger Lines=

Days Until Next

Quiz 25



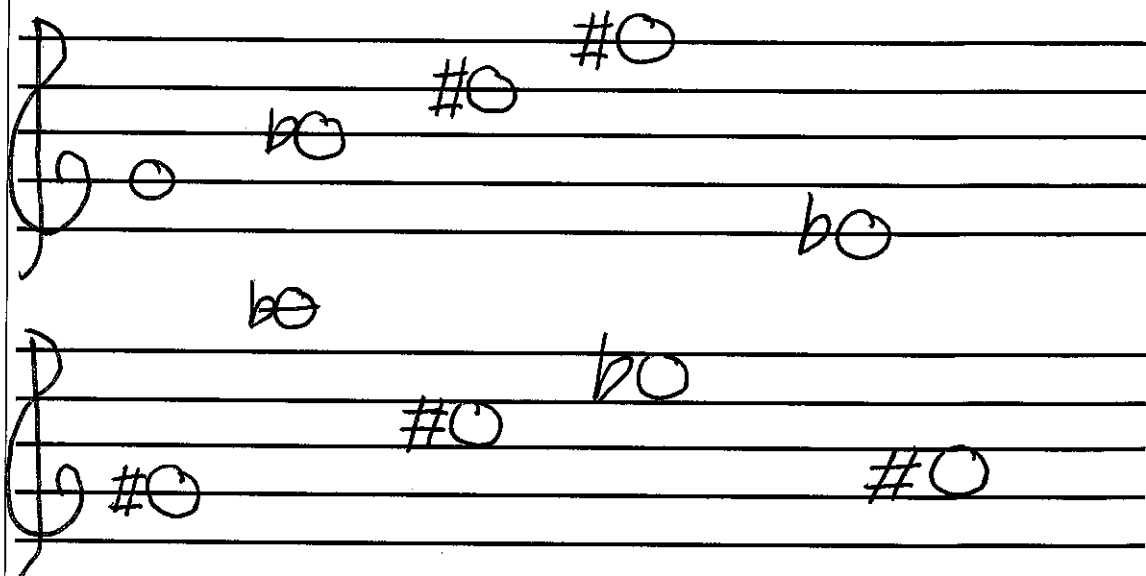
Friday

Flat Sign looks like _____ and the definition is=

Days Until Next

Quiz 24

Sharp Sign looks like _____ and the definition is=



Week of September 26-September 30

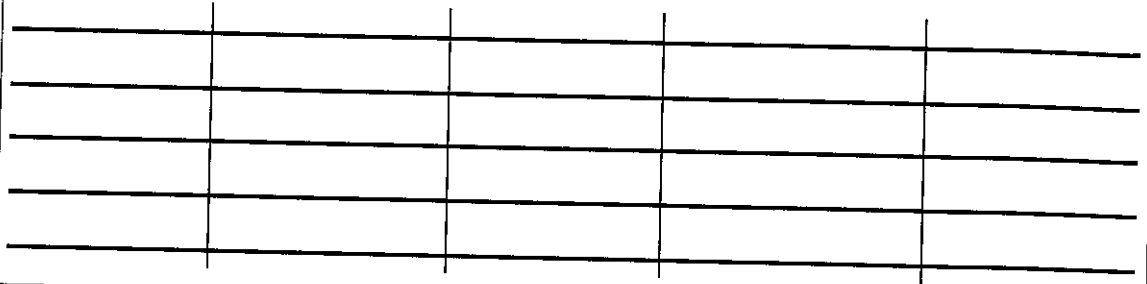
Monday

Definition of a Bass Clef=

Days Until Next

Quiz 23

On the staff below draw 1 bass clef in each measure



Tuesday

Musical Alphabet=

Days Until Next

Quiz 22

Because a Bass Clef is also known as the _____ Clef,
Bass Clef Notes Start with the note _____ on the _____ line

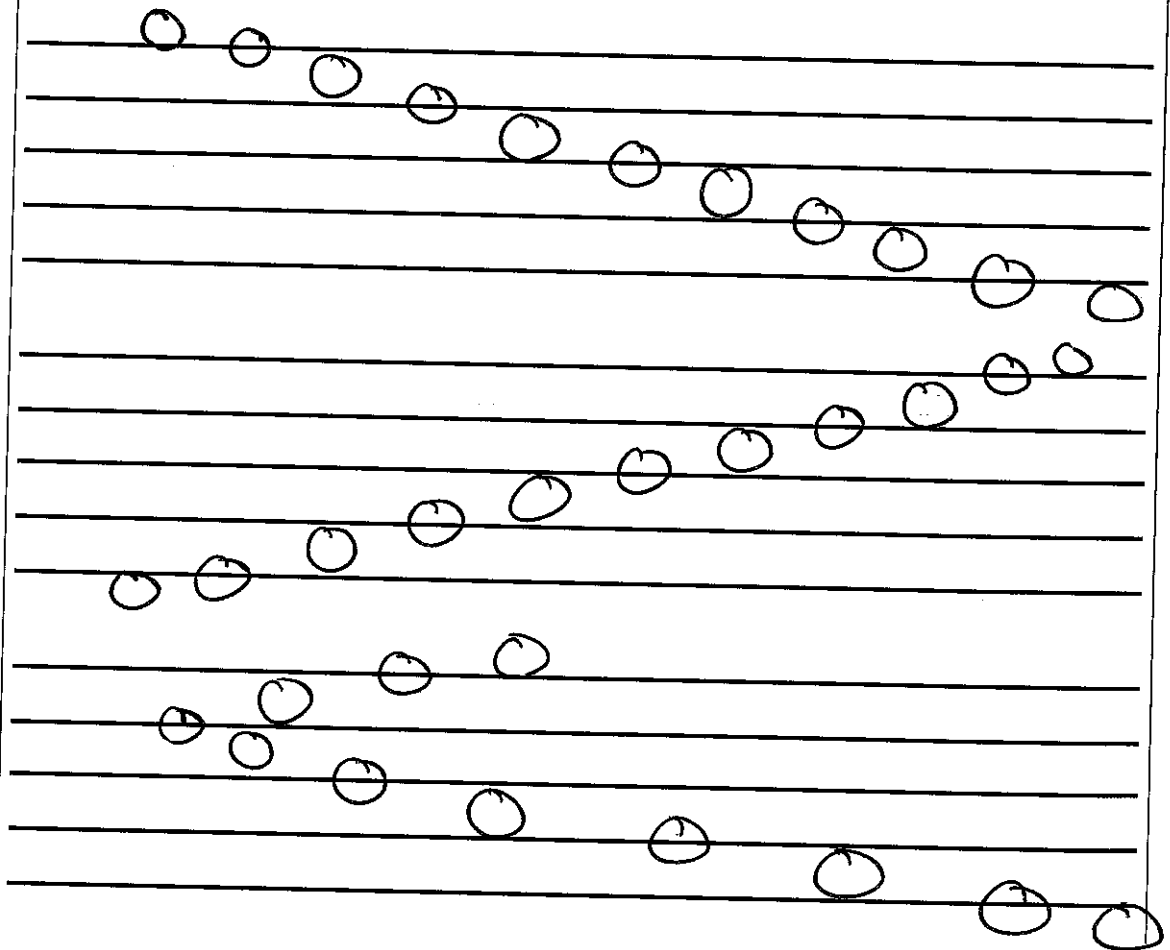
Up the staff=

Down the staff=

Draw a Bass Clef →

Draw a Bass Clef →

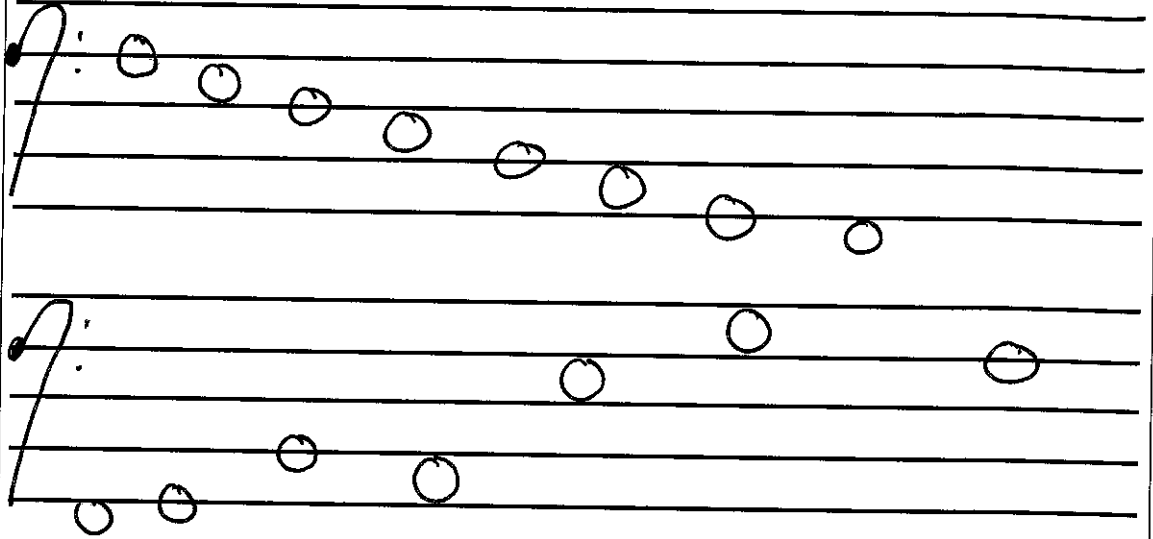
Draw a Bass Clef →



Wednesday

Days Until Next Quiz 21

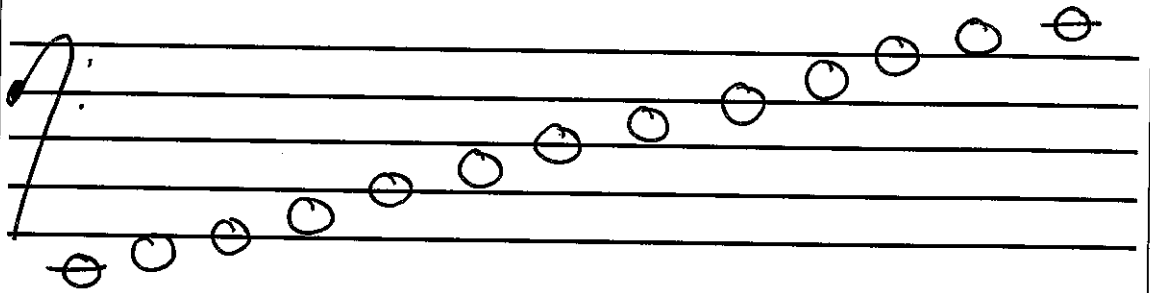
Natural Sign looks like _____ and the definition is=



Thursday

Days Until Next Quiz 20

Ledger Lines=

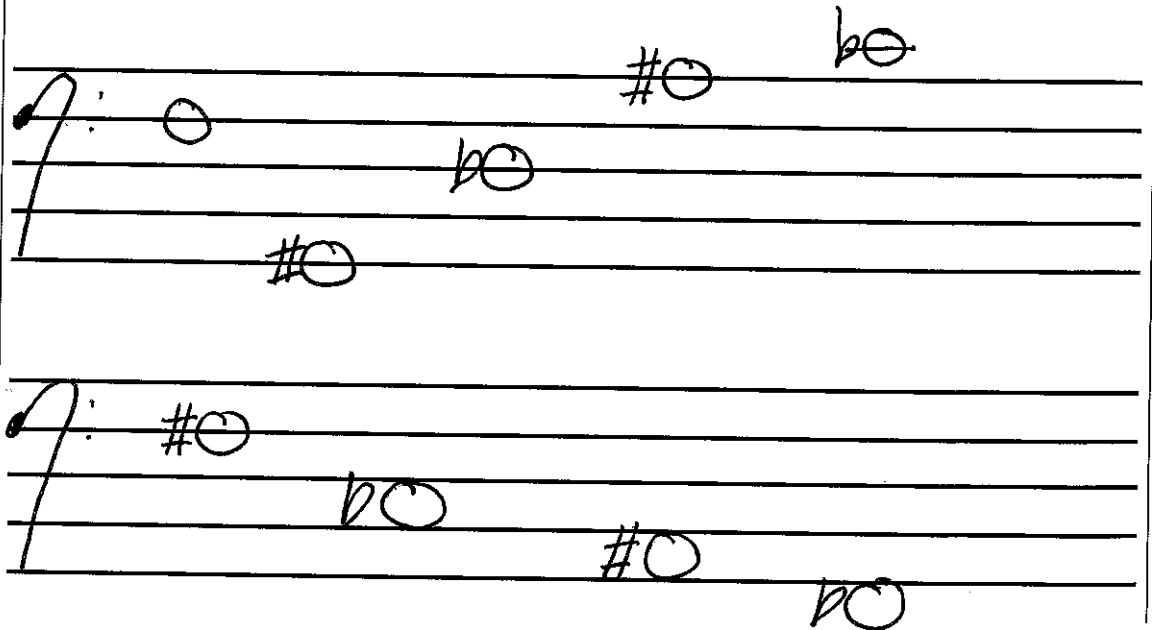


Friday

Days Until Next Quiz 19

Flat Sign looks like _____ and the definition is=

Sharp Sign looks like _____ and the definition is=



Week of October 3-October 7

Monday

Days Until Next

Quiz 18

Key Signature=

Handwritten musical notation for Monday. It consists of four systems of staves. The first system shows two staves with treble and bass clefs, key signatures of one flat and one sharp, and various notes. The second system shows a single treble staff with notes. The third system shows a single bass staff with notes. The fourth system shows a single treble staff with notes.

Tuesday

Days Until Next

Quiz 17

Draw a
Treble
Clef →

Write the correct Treble Clef Note name under each note
(remember to check the key signature)

Handwritten musical notation for Tuesday. It shows a single treble staff with notes and key signatures of one flat and one sharp.

Wednesday

Days Until Next Quiz 16

Draw a Bass Clef →

Write the correct Bass Clef Note name under each note (remember to check the key signature)

Thursday

Days Until Next Quiz 15

Draw a Treble Clef →

Write the correct Treble Clef Note name under each note (remember to check the key signature)

Friday

Days Until Next Quiz 14

Draw a Bass Clef →

Write the correct Bass Clef Note name under each note (remember to check the key signature)

Week of October 10-October 14

Monday

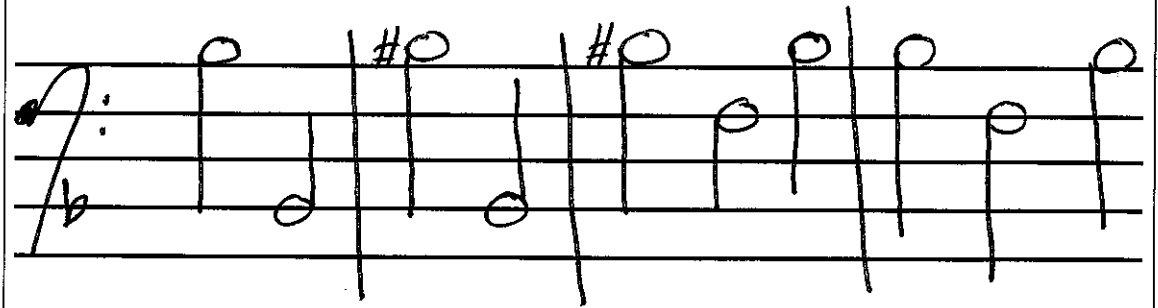
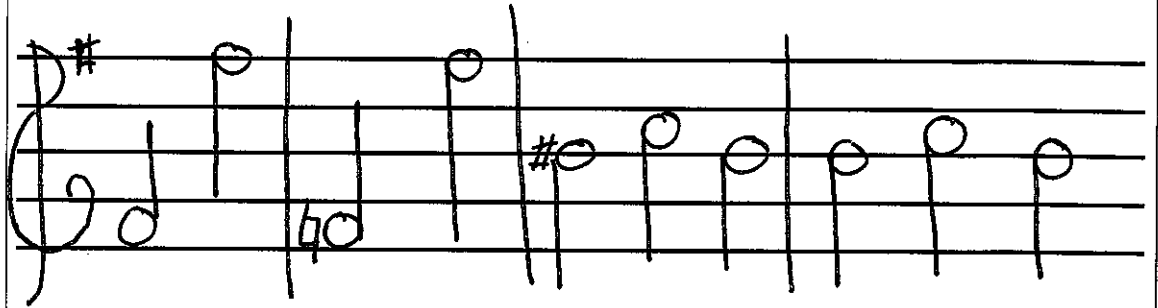
Days Until Next

Quiz 13

Accidentals=

Accidental Rule 1=

Accidental Rule 2=



Tuesday

Days Until Next

Quiz 12

Write the correct Treble Clef Note names under each note
(remember to check the key signature and watch out for accidentals)



Draw a
Treble
Clef

Wednesday

Days Until Next

Quiz 11

Write the correct Bass Clef Note names under each note
(remember to check the key signature and watch out for accidentals)



Draw a Bass Clef →

Thursday

Days Until Next

Quiz 10

Write the correct Treble Clef Note names under each note
(remember to check the key signature and watch out for accidentals)



Draw a Treble Clef →

Friday

Days Until Next

Quiz 9

Write the correct Bass Clef Note names under each note
(remember to check the key signature and watch out for accidentals)



Draw a Bass Clef →

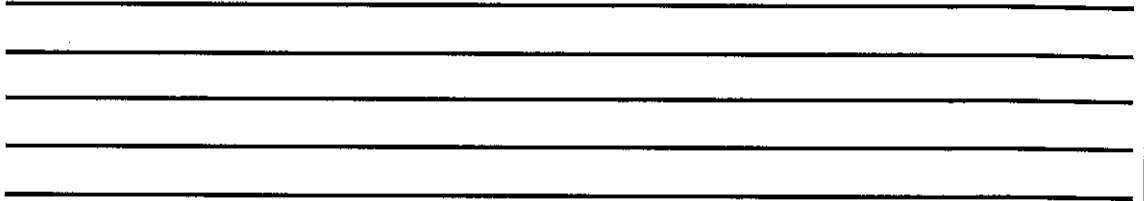
Week of October 17-October 21

*****REVIEW FOR QUIZ 2*****

Monday

Days Until Next Quiz 8

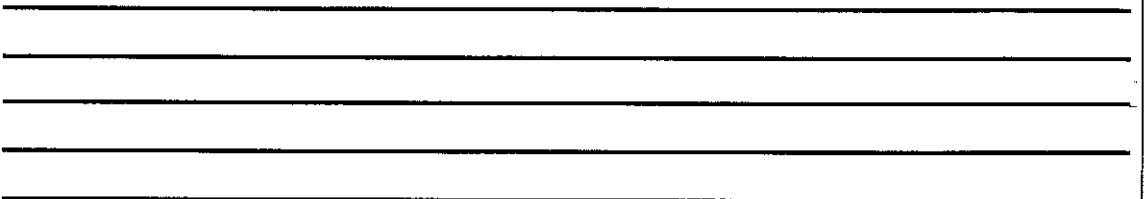
- Label the staff lines
- Create 5 measures (label measures)
- Draw a Repeat sign in measure 4
- Draw a Treble Clef in Measure 1
- Draw a Double Barline in Measure 5
- Draw a Treble Clef G Note in Measure 2
- Draw a Treble Clef Eb in Measure 3



Tuesday

Days Until Next Quiz 7

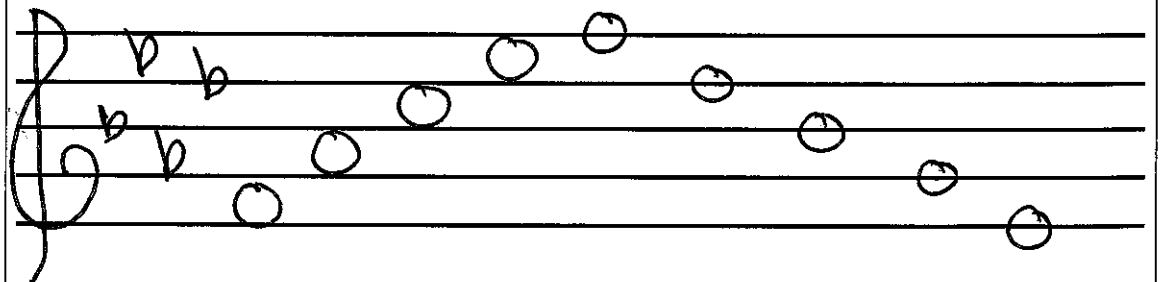
- Label the staff lines
- Create 4 measures (label measures)
- Draw a Repeat sign in measure 3
- Draw a Bass Clef in Measure 1
- Draw a Double Barline in Measure 4
- Draw a Bass Clef F Note in Measure 2



Wednesday

Days Until Next Quiz 6

Write the correct Treble Clef Note names under each note (remember to check the key signature and watch out for accidentals)



Thursday

Days Until Next

Quiz 5

Write the correct Bass Clef Note names under each note
(remember to check the key signature and watch out for accidentals)

A musical staff with a bass clef and a key signature of two sharps (F# and C#). The staff contains ten blank circles representing notes for identification. The notes are positioned on the following lines and spaces from left to right: 1st line (F#), 1st space (G), 2nd line (A), 2nd space (B), 3rd line (C#), 3rd space (D), 4th line (E), 4th space (F#), 5th line (G), and 5th space (A).

Friday

Days Until Next

Quiz 4

1. Write in the correct note names under each note.
2. Describe to me how you would play the music below with the first and second ending.

A musical staff with a treble clef, a key signature of one sharp (F#), and a 4/4 time signature. The staff contains a sequence of notes: F#4, G4, A4, B4, C5, B4, A4, G4, F#4, E4, D4, C4. The sequence ends with a first ending (1.) and a second ending (2.). The first ending consists of two measures: F#4, G4 and A4, B4. The second ending consists of two measures: C5, B4 and A4, G4. The piece concludes with the word "FINE".

Da Capo

FINE

Week of October 24-October 28

*******REVIEW FOR QUIZ 2*******

Monday

Days Until Next

Quiz 3

Definition of a staff=

Definition of a barline=

Definition of a measure=

Definition of a double barline=

Definition of a repeat sign=

Tuesday

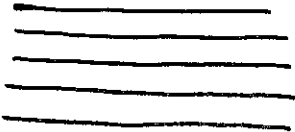


Days Until Next

Quiz 2

Da Capo=

Fine=

- On the staff below
- Label the staff
- Create 5 measures (label the measure numbers)
- Draw a Double barline at the end of Measure 5
- Draw a repeat sign at the end of measure 2
- A Treble clef in Measure 1
- Treble Note C# in Measure 3
- Treble Note Bb in Measure 4

<p>Wednesday</p> <p>Days Until Next Quiz 1</p>	<p>A Treble Clef looks like </p> <p>A Treble Clef is also known as _____ Clef</p> <p>A Bass Clef looks like </p> <p>A Bass Clef is also known as _____ Clef</p> <p>A Sharp Sign looks like _____ and the definition is=</p> <p>A Flat Sign looks like _____ and the definition is=</p> <p>A Natural Sign looks like _____ and the definition is=</p> <p>A ledger line is=</p> <p>A Key Signature=</p> <p>An Accidental=</p> <p>Accidental Rule #1=</p> <p>Accidental Rule #2=</p>
<p>Thursday </p> <p>Days Until Next Quiz</p>	<p align="center">*****QUIZ 2*****</p>
<p>Friday</p> <p>Days Until Next Quiz 30</p>	<p align="center">*****NO WARM-UPS*****</p>

Week of October 31-November 4

Monday

Days Until Next Quiz
29

Whole Note =

Whole Rest =

Tuesday

Days Until Next Quiz
28

Half Note =

Half Rest =

Wednesday

Days Until Next Quiz
27

Quarter Note =

Quarter Rest =

Thursday

Days Until Next Quiz 26

Eighth Note =

Eighth Rest =

Friday

Days Until Next Quiz 25

Write the correct counts in under each note

END OF QUARTER 1

HALF DAY

Week of November 7-November 11

Monday Days Until Next Quiz <p align="center">24</p>	COMPLETE RHYTHM CHART		
	NOTE NAME	SYMBOL	NUMBER OF COUNTS
	Whole Note		
	Whole Rest		
	Half Note		
	Half Rest		
	Quarter Note		
	Quarter Rest		
	Eighth Note		
Eighth Rest			

Tuesday Days Until Next Quiz 23	***NO SCHOOL***
--	------------------------

Wednesday Days Until Next Quiz <p align="center">22</p>	4 4	
	4 4	

Thursday Days Until Next Quiz <p align="center">21</p>	4 4	
	4 4	

Friday Days Until Next Quiz <p align="center">20</p>	4 4	
	4 4	

Week of November 14-November 18

Monday

Days Until Next Quiz

19

CONFERENCES

Time Signature

Top Number Time Signature=

Bottom Number Time Signature=

4-	2-
4-	4-
3-	4-
4-	2-
3-	2-
2-	2-

Tuesday

Days Until Next Quiz

3
4

18

2
2

Wednesday

Days Until Next Quiz

2
4

17

2
2

<p>Thursday</p> <p>Days Until Next Quiz</p> <p>2 4</p> <p>16</p> <p>3 4</p> <p>4 4</p>	<p>SYNCOPATION RHYTHMS</p>
--	-----------------------------------

<p>Friday</p> <p>Days Until Next Quiz</p> <p>4 4</p> <p>15</p> <p>3 4</p> <p>4 2</p>	<p>TIME SIGNATURE/SYNCO RHYTHMS</p>
--	--

Week of November 21-November 25

Monday

DOT RHYTHMS

Days Until Next Quiz

d. = d + — d. = d + — o. = o + —

14

3
4

Tuesday

TIME SIGNATURE/SYNCO RHYTHMS/DOT RHYTHMS

Days Until Next Quiz

4
4

2
4

13

6
4

Wednesday

Thursday

Friday

**THANKSGIVING BREAK NO SCHOOL
PRACTICE RECORD DUE ON TUESDAY NOVEMBER 29**

Week of November 28-December 2

*****REVIEW FOR QUIZ 3*****

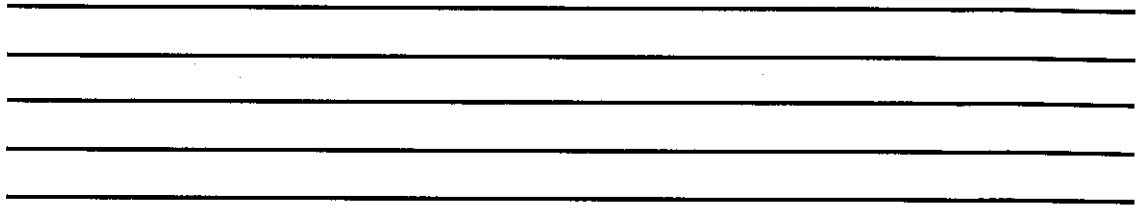
<p>Monday</p> <p>Days Until Next Quiz</p> <p>12</p>	<p>Definition of the staff=</p> <p>Definition of a Barline=</p> <p>Definition of a Measure=</p> <p>Definition of a Double Barline=</p> <p>Definition of a Repeat Sign=</p> <p>Da Capo Means=</p> <p>Fine Means=</p>
<p>Tuesday</p> <p>Days Until Next Quiz</p> <p>11</p>	<p>A Treble Clef looks like</p> <p>A Treble Clef is also known as _____ Clef</p> <p>A Bass Clef looks like</p> <p>A Bass Clef is also known as _____ Clef</p> <p>A Sharp Sign looks like _____ and the definition is=</p> <p>A Flat Sign looks like _____ and the definition is=</p> <p>A Natural Sign looks like _____ and the definition is=</p> <p>A ledger line is=</p> <p>A Key Signature=</p> <p>An Accidental=</p> <p>Accidental Rule #1=</p> <p>Accidental Rule #2=</p>

Wednesday

Days Until Next Quiz

10

- On the staff below
- Label the staff
- Create 5 measures (label the measure numbers)
- Draw a Double barline at the end of Measure 5
- Draw a repeat sign at the end of measure 2
- A Treble clef in Measure 1
- Treble Note C# in Measure 3
- Treble Note Bb in Measure 4

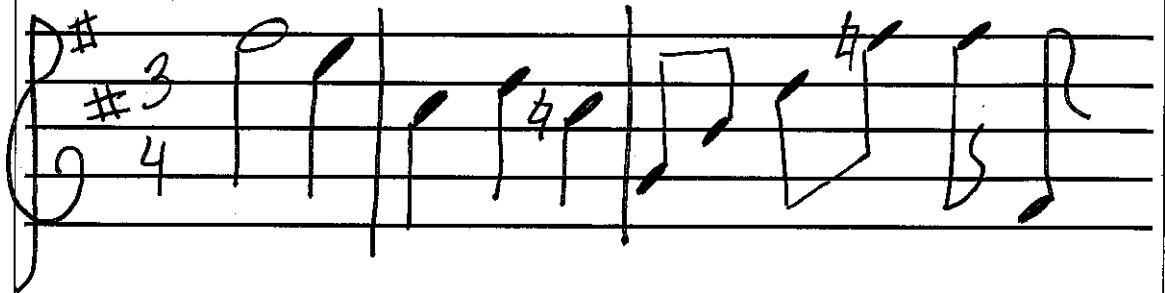


Thursday

Days Until Next Quiz

9

Write the correct Treble Clef Note names under each note (remember to check the key signature and watch out for accidentals)

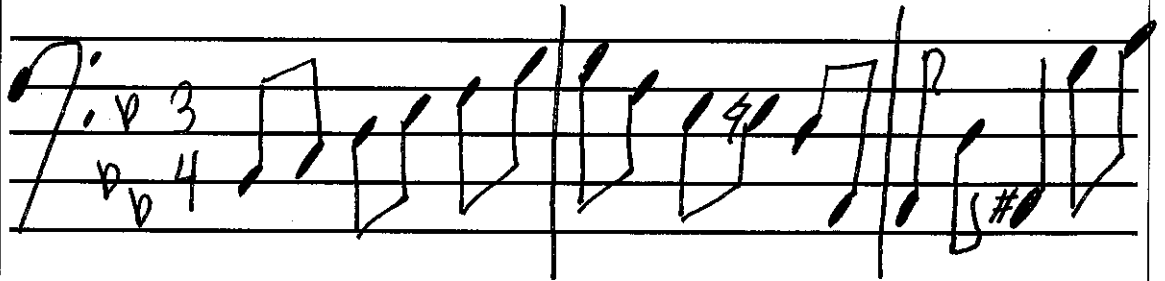


Friday

Days Until Next Quiz

8

Write the correct Bass Clef Note names under each note (remember to check the key signature and watch out for accidentals)



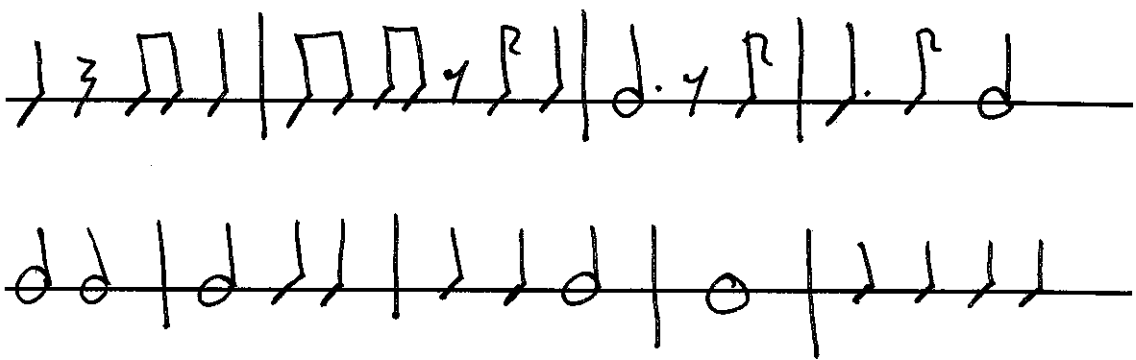
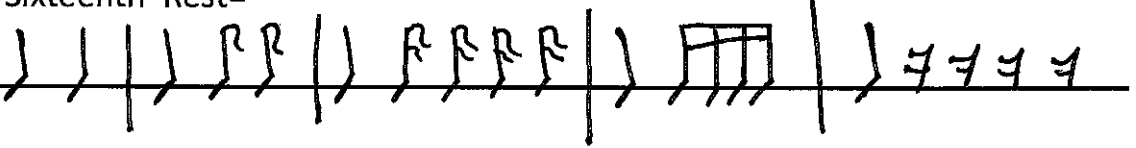
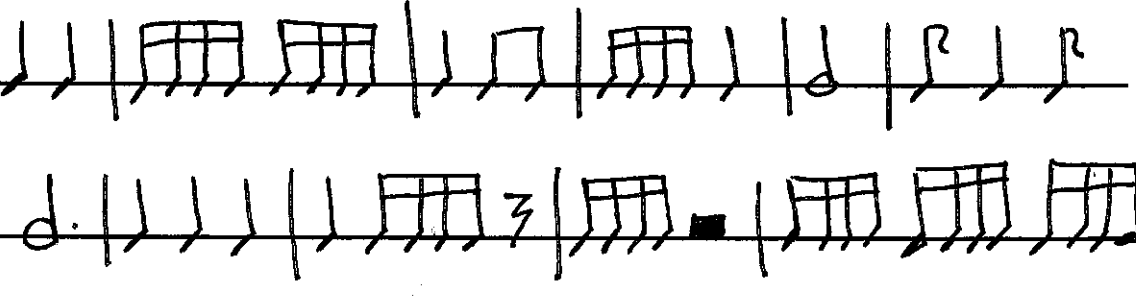
Week of December 5-December 9

REVIEW FOR QUIZ 3

<p>Monday</p> <p>Days Until Next Quiz</p> <p style="font-size: 2em; text-align: center;">7</p>	<p>COMPLETE RHYTHM CHART</p> <table border="1" style="width: 100%; border-collapse: collapse;"> <thead> <tr> <th style="width: 50%;">NOTE NAME</th> <th style="width: 20%;">SYMBOL</th> <th style="width: 30%;">NUMBER OF COUNTS</th> </tr> </thead> <tbody> <tr><td> </td><td> </td><td>1/2 beat</td></tr> <tr><td> </td><td> </td><td>1 beat</td></tr> <tr><td> </td><td> </td><td>2 beats</td></tr> <tr><td> </td><td> </td><td>4 beats</td></tr> <tr><td> </td><td> </td><td>1/2 silent</td></tr> <tr><td> </td><td> </td><td>1 silent</td></tr> <tr><td> </td><td> </td><td>2 silent</td></tr> <tr><td> </td><td> </td><td>4 silent</td></tr> </tbody> </table>	NOTE NAME	SYMBOL	NUMBER OF COUNTS			1/2 beat			1 beat			2 beats			4 beats			1/2 silent			1 silent			2 silent			4 silent
NOTE NAME	SYMBOL	NUMBER OF COUNTS																										
		1/2 beat																										
		1 beat																										
		2 beats																										
		4 beats																										
		1/2 silent																										
		1 silent																										
		2 silent																										
		4 silent																										
<p>Tuesday</p> <p>Days Until Next Quiz</p> <p style="font-size: 2em; text-align: center;">6</p>	<p>Time Signature</p> <p>Top Number Time Signature=</p> <p>Bottom Number Time Signature=</p> <table border="1" style="width: 100%; border-collapse: collapse;"> <tr> <td style="width: 50%; text-align: center;">2-</td> <td style="width: 50%; text-align: center;">3-</td> </tr> <tr> <td style="text-align: center;">4-</td> <td style="text-align: center;">4-</td> </tr> <tr> <td style="text-align: center;">4-</td> <td style="text-align: center;">2-</td> </tr> <tr> <td style="text-align: center;">4-</td> <td style="text-align: center;">2-</td> </tr> <tr> <td style="text-align: center;">3-</td> <td style="text-align: center;">4-</td> </tr> <tr> <td style="text-align: center;">2-</td> <td style="text-align: center;">2-</td> </tr> </table>	2-	3-	4-	4-	4-	2-	4-	2-	3-	4-	2-	2-															
2-	3-																											
4-	4-																											
4-	2-																											
4-	2-																											
3-	4-																											
2-	2-																											
<p>Wednesday</p> <p>Days Until Next Quiz</p> <p style="font-size: 2em; text-align: center;">5</p>	<p>TIME SIGNATURE/SYNCO RHYTHMS/DOT RHYTHMS</p>																											
<p>Thursday</p> <p>Friday</p> <p style="font-size: 2em; text-align: center;">4 3</p>	<p>*** NO WARM UPS CONCERT ***</p>																											

Week of December 12-December 16

REVIEW FOR QUIZ 3

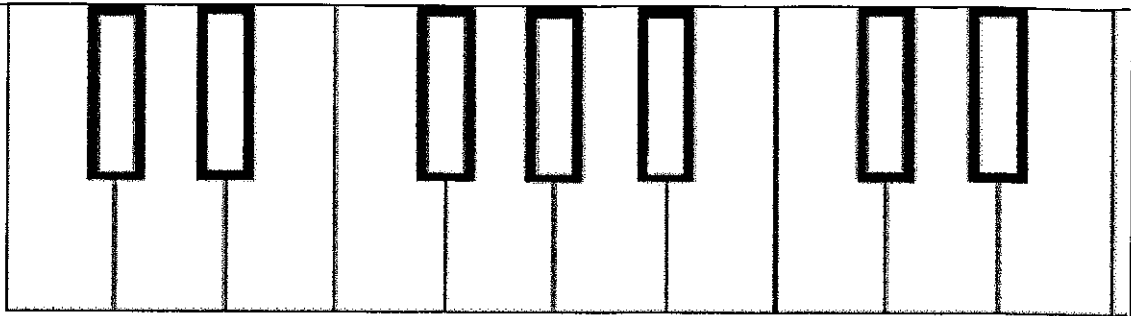
Monday Days Until Next Quiz <div style="text-align: right; font-size: 2em; margin-right: 10px;">4</div> <div style="text-align: right; font-size: 2em; margin-right: 10px;">4</div> <div style="text-align: right; font-size: 3em; margin-right: 10px;">2</div> <div style="text-align: right; font-size: 2em; margin-right: 10px;">2</div> <div style="text-align: right; font-size: 2em; margin-right: 10px;">2</div>	TIME SIGNATURE/SYNCO RHYTHMS/DOT RHYTHMS 																		
Tuesday Days Until Next Quiz <div style="text-align: right; font-size: 2em; margin-right: 10px;">1</div>	REVIEW FOR QUIZ 3 <table border="1" style="width: 100%; border-collapse: collapse; margin-top: 5px;"> <tr> <td style="padding: 2px;">Staff</td> <td style="padding: 2px;">Treble Clef/Notes</td> <td style="padding: 2px;">Half Notes/Rests</td> </tr> <tr> <td style="padding: 2px;">Barline</td> <td style="padding: 2px;">Bass Clef/Notes</td> <td style="padding: 2px;">Quarter Notes/Rests</td> </tr> <tr> <td style="padding: 2px;">Measures</td> <td style="padding: 2px;">Natural/Sharp/Flat Notes</td> <td style="padding: 2px;">Eighth Notes/Rests</td> </tr> <tr> <td style="padding: 2px;">Double Barline</td> <td style="padding: 2px;">Key Signature</td> <td style="padding: 2px;">Syncopated Rhythms</td> </tr> <tr> <td style="padding: 2px;">Repeat Sign</td> <td style="padding: 2px;">Accidentals</td> <td style="padding: 2px;">Dotted Rhythms</td> </tr> <tr> <td style="padding: 2px;">1st 2nd Endings</td> <td style="padding: 2px;">Whole Notes/Rests</td> <td style="padding: 2px;">Time Signature</td> </tr> </table>	Staff	Treble Clef/Notes	Half Notes/Rests	Barline	Bass Clef/Notes	Quarter Notes/Rests	Measures	Natural/Sharp/Flat Notes	Eighth Notes/Rests	Double Barline	Key Signature	Syncopated Rhythms	Repeat Sign	Accidentals	Dotted Rhythms	1 st 2 nd Endings	Whole Notes/Rests	Time Signature
Staff	Treble Clef/Notes	Half Notes/Rests																	
Barline	Bass Clef/Notes	Quarter Notes/Rests																	
Measures	Natural/Sharp/Flat Notes	Eighth Notes/Rests																	
Double Barline	Key Signature	Syncopated Rhythms																	
Repeat Sign	Accidentals	Dotted Rhythms																	
1 st 2 nd Endings	Whole Notes/Rests	Time Signature																	
Wednesday Days Until Quiz 0	***QUIZ 3***																		
Thursday Days Until Next Quiz <div style="text-align: right; font-size: 2em; margin-right: 10px;">19</div> <div style="text-align: right; font-size: 2em; margin-right: 10px;">2</div> <div style="text-align: right; font-size: 2em; margin-right: 10px;">4</div>	Sixteenth Note = Sixteenth Rest = 																		
Friday Days Until Next Quiz <div style="text-align: right; font-size: 2em; margin-right: 10px;">18</div> <div style="text-align: right; font-size: 2em; margin-right: 10px;">2</div> <div style="text-align: right; font-size: 2em; margin-right: 10px;">4</div> <div style="text-align: right; font-size: 2em; margin-right: 10px;">3</div> <div style="text-align: right; font-size: 2em; margin-right: 10px;">4</div>																			

Week of December 19-December 23

Monday

Days Until Next Quiz

17



The note _____ is to the _____ of the 2_____ Keys

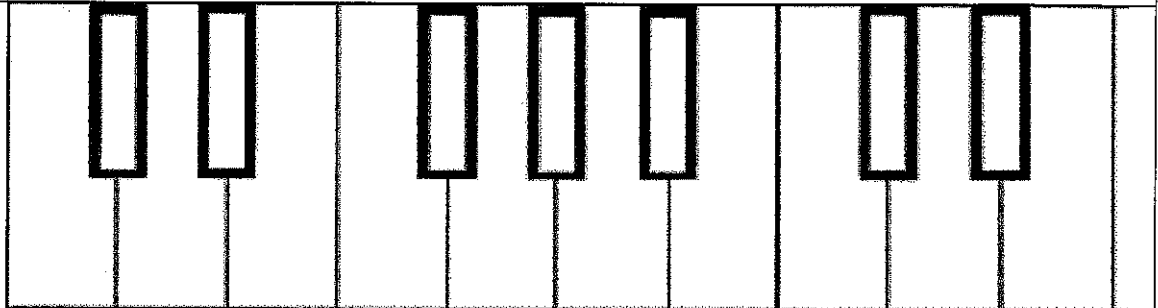
Natural Notes look like _____ and the definition=

Musical Alphabet=

Tuesday

Days Until Next Quiz

16



The note _____ is to the _____ of the 2_____ Keys

Natural Notes look like _____ and the definition=

Sharp Notes look like _____ and the definition=

Flat Notes Look like _____ and the definition=

Enharmonic Notes=

Wednesday

Days Until Next Quiz

15

Articulations=

Complete the Articulation Chart

Articulation Name	SYMBOL	Definition
Tenuto		
staccato		
Accent		
Marcato		

Thursday

Days Until Next Quiz

14

Dynamics=

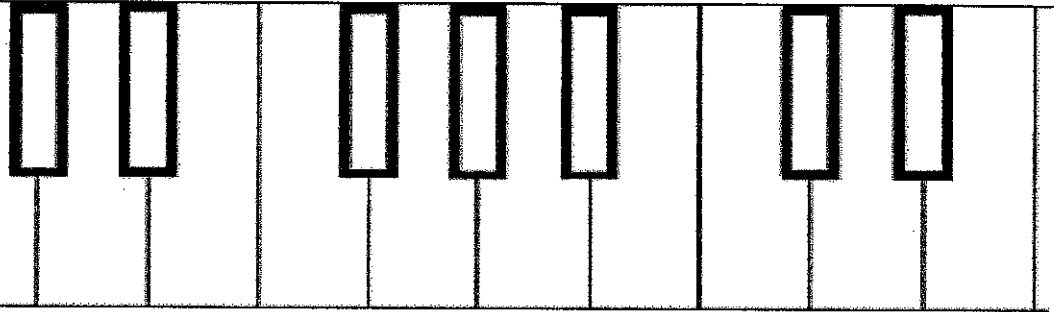
Complete the Dynamic Chart

Dynamic Name	SYMBOL	Definition
Pianissimo		
Piano		
Mezzo Piano		
Mezzo Forte		
Forte		
Fortissimo		
Crescendo		
Decrescendo		

Friday

Days Until Next Quiz

13



The note _____ is to the _____ of the 2_____ Keys

Natural Notes look like _____ and the definition=

Sharp Notes look like _____ and the definition=

Flat Notes Look like _____ and the definition=

Enharmonic Notes=


WINTER BREAK! DECEMBER 24-JANUARY 9th

DURING WINTER BREAK COMPLETE YOUR PRACTICE RECORD

CAN BE FOUND ON THE WEBSITE, AND THE BACK OF YOUR WARM-UP PACKET

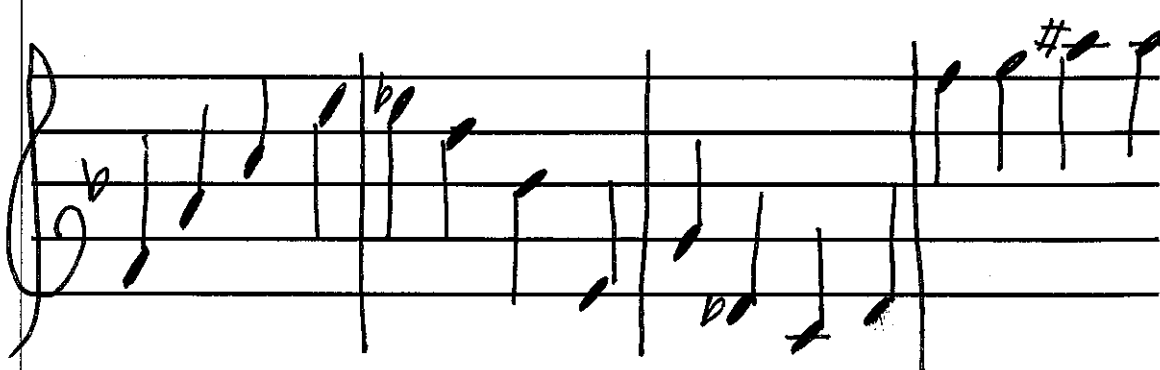
Week of January 9-January 13
*****REVIEW FOR MIDTERM EXAM*****

<p>Monday</p> <p>Days Until Next Quiz</p> <p align="center">12</p>	<p>Definition of the staff=</p> <p>Definition of a Barline=</p> <p>Definition of a Measure=</p> <p>Definition of a Repeat Sign=</p> <p>Definition of a Double Barline=</p> <p>Da Capo Means=</p> <p>Fine Means=</p>
<p>Tuesday</p> <p>Days Until Next Quiz</p> <p align="center">11</p>	<p>Below on the staff provided:</p> <p align="center">Label the staff correctly (lines and spaces)</p> <p align="center">Create 3 measures (Label correctly)</p> <p align="center">Draw a repeat sign at the end of measure 1</p> <p align="center">Draw a double barline at the end of measure 3</p> <hr/> <hr/> <hr/> <hr/> <hr/>
<p>Wednesday</p> <p>Days Until Next Quiz</p> <p align="center">10</p>	<p>Treble Clef is also known as the _____ Clef</p> <p>Bass Clef is also known as the _____ Clef</p> <p>Draw the Treble Clef</p> <hr/> <hr/> <hr/> <hr/> <p>Draw the Bass Clef</p> <hr/> <hr/> <hr/> <hr/>

<p>Thursday</p> <p>Days Until Next Quiz</p> <p>9</p>	<p>Melanchly Waltz</p> 
<p>Friday</p> <p>Days Until Next Quiz</p> <p>8</p>	<p>A Ledger Line=</p> <p>A Key Signature=</p> <p>An Accidental=</p> <p>Accidental Rule #1=</p> <p>Accidental Rule #2=</p>

Week of January 16-January 20

*****Review for Midterm Exam**

<p>Monday</p> <p>Days Until Next Quiz</p> <p>7</p> <p>NO SCHOOL</p>	<p>Write the correct Treble Clef Note names under each note (remember to check the key signature and watch out for accidentals)</p> 
--	---

Write the correct Bass Clef Note names under each note
(remember to check the key signature and watch out for accidentals)

Tuesday

Days Until Next Quiz

6

Articulations=




Complete the Articulation Chart

Articulation Name	SYMBOL	Definition


Dynamics=

Complete the Dynamic Chart

Dynamic Name	SYMBOL	Definition
		Very Soft
		Very Loud
		Soft
		Loud
		Medium Soft
		Medium Loud
		Gradually get louder
		Gradually get softer

Wednesday Days Until Next Quiz 5	NOTE NAME	SYMBOL	NUMBER OF COUNTS
	Eighth Note		
			4 Counts
			
	Half Note		
		3	
			1 Count
	Sixteenth Rest		
			

Thursday Days Until Next Quiz 4	Time Signature	
	Top Number Time Signature=	
	Bottom Number Time Signature=	
	4 -	2 -
	4 -	4 -
	3 -	2 -
4 -	2 -	
3 -	4 -	
2 -	2 -	

Friday Days Until Next Quiz 3										
	The note _____ is to the _____ of the 2 _____ Keys									
	Natural Notes look like _____ and the definition=									
	Sharp Notes look like _____ and the definition=									
	Flat Notes Look like _____ and the definition=									
	Enharmonic Notes=									

Week of January 23-January 27

*****REVIEW FOR MIDTERM*****

<p>Monday</p> <p>Days Until Next Quiz 4 4 2</p>	<p>RHYTHMS</p>
<p>Tuesday</p> <p>Days Until Next Quiz 4 4 1</p>	<p>RHYTHMS</p>
<p>Wednesday</p> <p>Days Until Next Quiz 0</p>	<p align="center">***MIDTERM EXAM***</p>
<p>Thursday</p> <p>Friday</p>	<p align="center">NO WARM UPS END OF QUARTER 2 HALF DAY FRIDAY</p>



Name: _____

Hour: _____

Winter Break Practice Record

DUE TUESDAY JANUARY 10th 2017

As Musicians we know the importance of practicing so we don't forget the material when we are gone.

Students are required to practice a minimum of 400 Minutes for Winter Break.

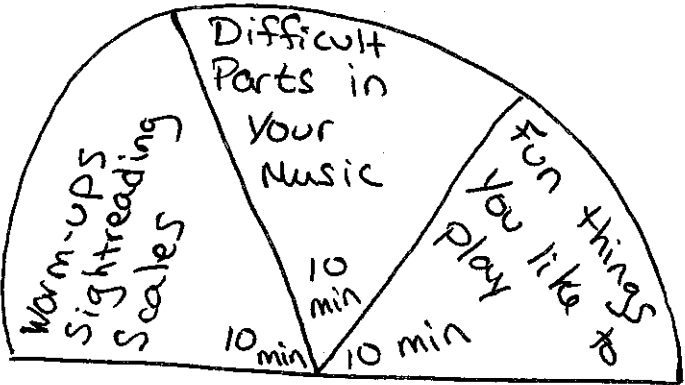
Students write down how many minutes you practiced each day, and have a parent sign after you practice.

For every 50 minutes over 400 minutes, you can receive extra credit.

Date	What I Practiced	Minutes Practiced	Parent Signature
December 24 (Saturday)			
December 25 (Sunday)			
December 26 (Monday)			
December 27 (Tuesday)			
December 28 (Wednesday)			
December 29 (Thursday)			
December 30 (Friday)			
December 31 (Saturday)			
January 1 (Sunday)			
January 2 (Monday)			
January 3 (Tuesday)			
January 4 (Wednesday)			
January 5 (Thursday)			
January 6 (Friday)			

January 7 (Saturday)			
January 8 (Sunday)			
Total Minutes Practiced			

400 Minutes total is 30 minutes for 13 Days

How To Break Down Your Practice Time	What to focus on in our class music
 <p>Warm-ups Sightreading Scales 10 min</p> <p>Difficult Parts in Your Music 10 min</p> <p>Fun things you like to play 10 min</p>	

Name: _____

Hour: _____

Thanksgiving Break Practice Record

DUE TUESDAY November 29 2016

As Musicians we know the importance of practicing so we don't forget the material when we are gone.

Students are required to practice a minimum of 120 Minutes for Winter Break.

Students write down how many minutes you practiced each day, and have a parent sign after you practice.

For every 50 minutes over 120 minutes, you can receive extra credit.

Date	What I Practiced	Minutes Practiced	Parent Signature
November 23 (Wednesday)			
November 24 (Thursday)			
November 25 (Friday)			
November 26 (Saturday)			
November 27 (Sunday)			
Total Minutes Practiced			

120 Minutes total is 30 minutes for 4 Days

How To Break Down Your Practice Time	What to focus on in our class music
